

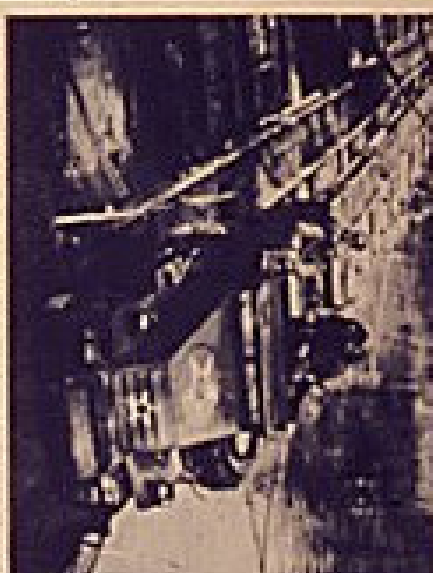
# METAL makes MIGHT! Keep it Coming!



IN PHOTO TOP LEFT, MAINTENANCE MAN—T. J. HALL OF COMPANY, POINT B. STATION



IN PHOTO MIDDLE RIGHT, MAINTENANCE MAN—T. J. HALL OF COMPANY, POINT B. STATION



IN PHOTO BOTTOM RIGHT, MAINTENANCE MAN—T. J. HALL OF COMPANY, POINT B. STATION



IN PHOTO TOP CENTER, MAINTENANCE MAN—T. J. HALL OF COMPANY, POINT B. STATION



IN PHOTO MIDDLE LEFT, MAINTENANCE MAN—T. J. HALL OF COMPANY, POINT B. STATION



IN PHOTO BOTTOM LEFT, MAINTENANCE MAN—T. J. HALL OF COMPANY, POINT B. STATION



U. S. GOVERNMENT PRINTING OFFICE: 1954

**MILES OF HELL**

*to Tokyo!*



**WORK WHERE  
YOU'RE NEEDED**

**CONSULT YOUR U.S. EMPLOYMENT SERVICE OFFICE**

**WAR MANPOWER COMMISSION**



# MILK and MONEY



*Vital for Victory!*

**Put Part of Every  
Milk Check in**



**WAR BONDS**


**Millions of troops  
are on the move...**




**Is YOUR trip necessary?**

**OFFICE OF DEFENSE TRANSPORTATION**

# MINE AMERICA'S COAL



“...we'll make it hot  for the enemy!”

*norman  
rockwell*

**SEE YOUR UNITED STATES EMPLOYMENT SERVICE**

WAR MANPOWER COMMISSION

# MINIMUM STANDARDS FOR EMPLOYMENT OF WOMEN IN INDUSTRY

	<p>MARCH</p> <table border="1"> <tr><td>1</td><td>2</td><td>3</td><td>4</td><td>5</td><td>6</td><td>7</td></tr> <tr><td>8</td><td>9</td><td>10</td><td>11</td><td>12</td><td>13</td><td>14</td></tr> <tr><td>15</td><td>16</td><td>17</td><td>18</td><td>19</td><td>20</td><td>21</td></tr> <tr><td>22</td><td>23</td><td>24</td><td>25</td><td>26</td><td>27</td><td>28</td></tr> <tr><td>29</td><td>30</td><td>31</td><td></td><td></td><td></td><td></td></tr> </table>	1	2	3	4	5	6	7	8	9	10	11	12	13	14	15	16	17	18	19	20	21	22	23	24	25	26	27	28	29	30	31							
1	2	3	4	5	6	7																																	
8	9	10	11	12	13	14																																	
15	16	17	18	19	20	21																																	
22	23	24	25	26	27	28																																	
29	30	31																																					
1. A DAY OF NOT MORE THAN 8 HOURS	2. A 48-HOUR WEEK WITH 1 DAY OF REST	3. NO NIGHT WORK NORMAL SLEEP	4. REST PERIODS TO RELIEVE CONSTANT STANDING OR CONSTANT SITTING	5. A CHAIR ADJUSTED TO THE WORKER AND HER JOB																																			
		<p>6. CLEAN WELL-VENTILATED WORKROOMS</p>																																					
6. AT LEAST 30 MINUTES FOR LUNCH	7. GOOD NATURAL AND ARTIFICIAL LIGHTING	8. CLEAN WELL-VENTILATED WORKROOMS	9. A WAGE BASED ON OCCUPATION, NOT ON SEX OR RACE	10. A LIVING WAGE FOR SELF AND DEPENDENTS																																			
11. SANITARY DRINKING AND WASHING FACILITIES, SEPARATE TOILETS	12. SATISFACTORY LUNCH ROOMS, CLOAK ROOMS, AND REST ROOMS	DEPARTMENT OF LABOR UNITED STATES OF AMERICA	13. JOBS NOT PROHIBITED TO WOMEN UNLESS MORE DANGEROUS THAN TO MEN	14. A WOMAN TO SUPERVISE THE EMPLOYMENT OF WOMEN																																			
<p>15. PREVENTION OF INDUSTRIAL INJURIES AND DISEASES</p>				<p>16. PROTECTION AGAINST DUST, FUMES, FLYING PARTICLES</p>																																			
				<p>18. PREVENTION OF STRAIN AT WORK</p>																																			
<p>19. ELIMINATION OF FIRE HAZARDS</p>		<p>THE WOMEN'S BUREAU WAS CREATED BY CONGRESS TO FORMULATE STANDARDS AND POLICIES WHICH SHALL PROMOTE THE WELFARE OF WAGE-EARNING WOMEN, IMPROVE THEIR WORKING CONDITIONS, INCREASE THEIR EFFICIENCY AND ADVANCE THEIR OPPORTUNITIES FOR PROFITABLE EMPLOYMENT AND IS AUTHORIZED TO INVESTIGATE AND REPORT UPON ALL MATTERS PERTAINING TO THE WELFARE OF EMPLOYED WOMEN</p>		<p>20. FIRST-AID EQUIPMENT</p>																																			



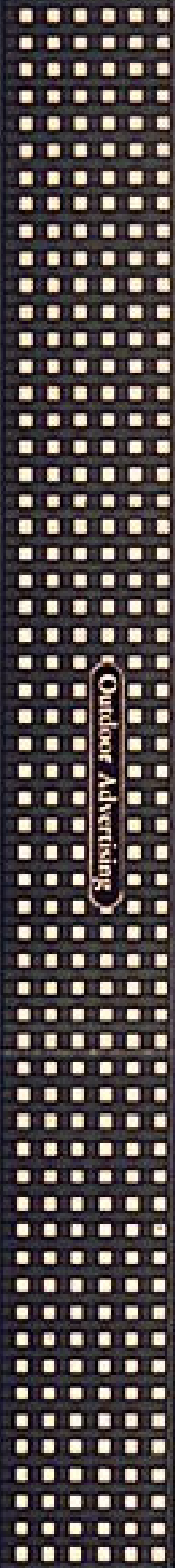
—MAYOR'S PARTNER—

...MISSING IN ACTION...

**SOMEBODY TALKED  
V-HOMES ARE CAREFUL**



Outdoor Advertising





# **MONEY**

*BY THE BILLIONS FOR:*

**MECHANIZED ARMIES**

**BIGGER NAVIES**

**TANKS**

**AIRPLANES**

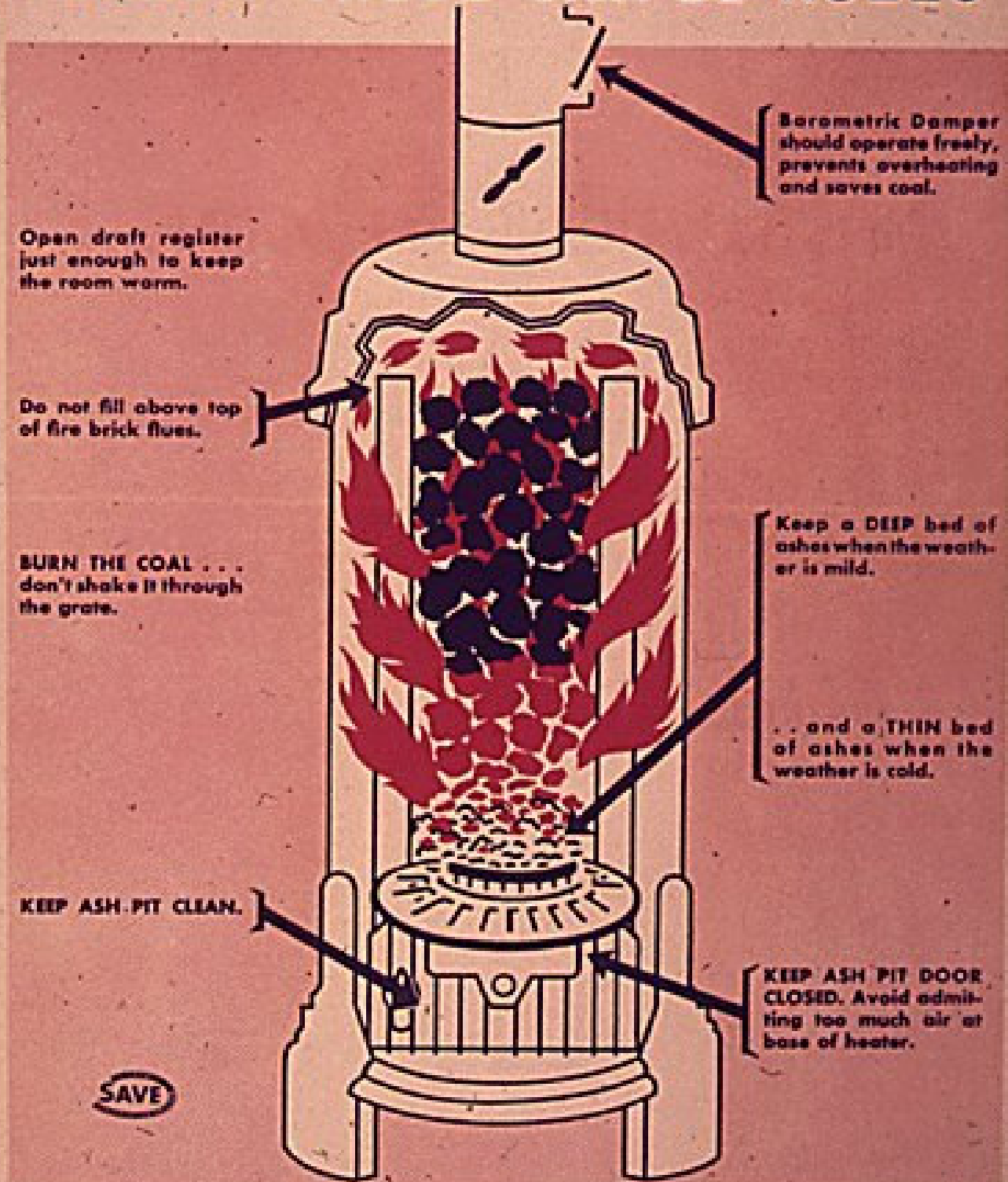
**FOOD**

**CLOTHING**

**AMMUNITION**

# more COMFORT less WORK

## FOLLOW THESE SIMPLE RULES



SAVE

# COAL IS SCARCE - DON'T WASTE IT!

# More COPPER-ZINC-LEAD..quick!

GIVE US METAL  
SO IT WON'T  
HAPPEN HERE!

COUNT  
ON ME,  
BUDDY!

TOO LITTLE  
AND TOO  
LATE



ROLLIN  
KIRBY

© 1942 U.S. Army



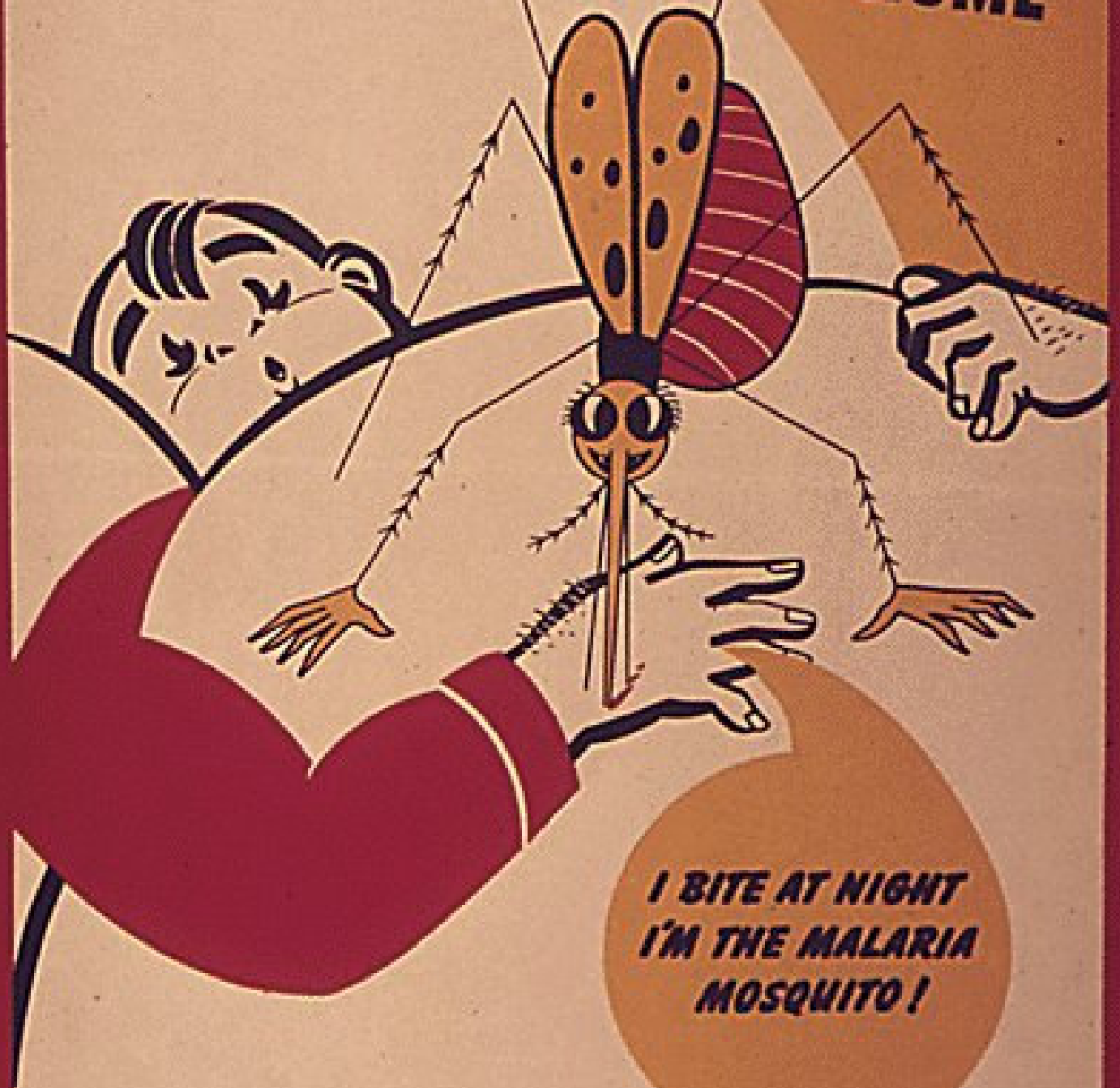
*more Firepower  
to 'em!*

**MORE!**



**MORE of EVERYTHING  
— QUICK!**

# PROTECT YOURSELF MOSQUITO PROOF YOUR HOME



***I BITE AT NIGHT  
I'M THE MALARIA  
MOSQUITO!***

**DUST PARIS GREEN ON  
SWAMPS AND PONDS**

*CURSES!  
IT'S PLAIN TO SEE  
MALARIA MOSQUITOES  
WE'LL NEVER BE!*



U. S. GOVERNMENT PRINTING OFFICE : 1948-O-514119

Federal Security Agency  
U. S. PUBLIC HEALTH SERVICE

Arny

**HA! HA!  
HE'S WASTING  
HIS MONEY ON  
CHILL TONICS!**



**SEE YOUR DOCTOR FOR PROPER  
TREATMENT FOR MALARIA**



# Man-Made Malaria

**6  
MOSQUITOES  
IN 10**



**BREED IN WATER**

**IN**

**UNNECESSARY RUTS**

**ABANDONED ROADS**

**BLOCKED DITCHES**

**FOX AND SHELL HOLES**

# MALARIA WARNING

You will soon be entering  
a Malaria Zone . . . Protect  
yourself and your buddies  
by carefully following all  
precautions as ordered by  
your commanding officer.

*Malaria Knocks Out More  
Men than the Enemy!*

***FIGHT THE PERIL BEHIND THE LINES***

MAMA, WHAT  
DID YOU DO  
IN WORLD  
WAR TWO?



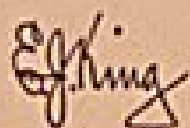
THE QUESTION  
PAPA DREADED  
IN WORLD WAR I

WOMENS Army Corps  
U.S. Information Bldg  
1400 Penn Ave. N.W.

HEOS/ER/  
+  
C.D.

# MAN YOUR STATIONS!

**"The Navy must  
have 16 million  
gallons of fuel a  
day to carry the  
fight to the enemy"**



COMMANDER-IN-CHIEF OF THE U. S. FLEET  
CHIEF OF NAVAL OPERATIONS

RONALD  
McLEOD

***Stick to your job -***  
**OIL IS AMMUNITION**

A black and white photograph of a rural landscape. In the foreground, there is a dirt road or path. To the left, a wooden fence runs across the frame. In the background, a cross is visible on a hillside. The overall scene is somewhat desolate and rural.

# Manila — Batam

## *Searched*

*It ALL  
depends on*

*ME*

# MANPOWER LOST IN 1941- SHOP ACCIDENTS DEPRIVED OUR FIGHTING FORCES OF:

7	<i>extra</i> Battleships	
3,750	<i>extra</i> Heavy Bombers	
7,500	<i>extra</i> Fighter Planes	
11,250	<i>extra</i> Light Tanks	

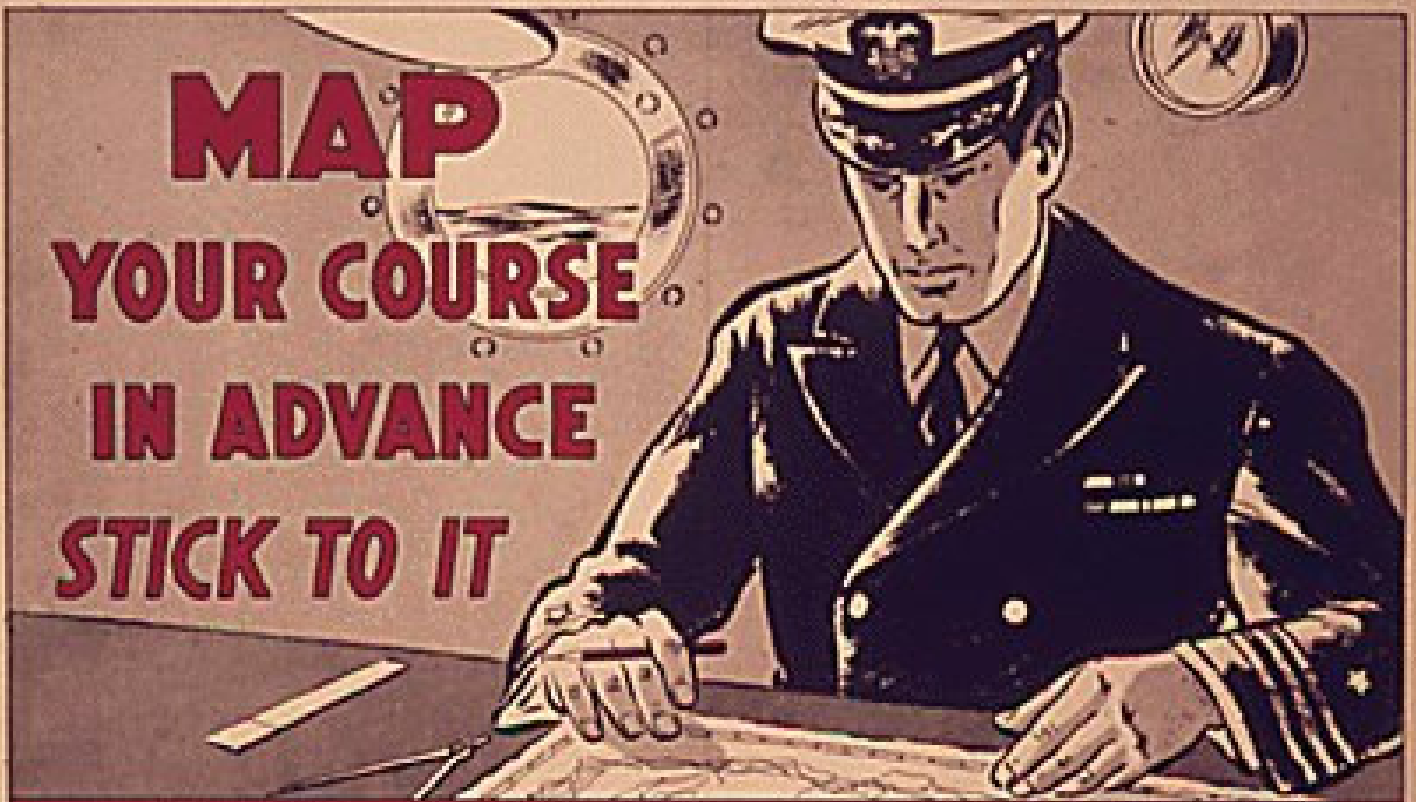
*for Victory's Sake-*  
**STAY ON THE JOB!**

## Nations Fall When Workers Stall

EMPLOYEE PRIZE WINNING SLOGAN

ALBERT B. WEINBRENNER CO. MILWAUKEE - MARSHFIELD - MERRILL - ARTIST

**MAP  
YOUR COURSE  
IN ADVANCE  
STICK TO IT**



**CROSS  
ONLY AT  
CORNERS**



*They say two can  
live as cheaply as  
one -- but I guess  
that's true only if  
they don't eat. So  
while we girls practice  
cooking you'd better  
practice saving.*

*Love,*

*Margie*

✓ SOLDIERS' DEPOSITS ✓ PERSONAL TRANSFER ACCOUNT ✓ CLASS E ALLOTMENTS OF PAY ✓ WAR BONDS  
✓ NATIONAL SERVICE LIFE INSURANCE





whenever I hear about  
our men all over the  
world falling for the  
old, old sharpers' tricks,  
I'm glad I can be  
sure that you're too  
smart to get mixed  
up in games like that.  
I know there's not much  
fun to be had where  
you are now, but  
you've picked a winner  
in deciding to put your  
savings away before your  
fingers start to itch.

Love,  
Margie

- ✓ SOLDIERS' DEPOSITS
- ✓ PERSONAL TRANSFER ACCOUNT
- ✓ CLASS E ALLOTMENTS OF PAY
- ✓ WAR BONDS
- ✓ NATIONAL SERVICE LIFE INSURANCE

sure. Sure fishing. We  
gals have postwar plans,  
too, and you're right  
in the middle of them.  
We're saving to make  
them come true, and  
we'd like to think  
you are, too. I hear  
tell there's nothing more  
slippier than those  
socks, so why not pop  
it into savings before  
it has a chance to  
slip?

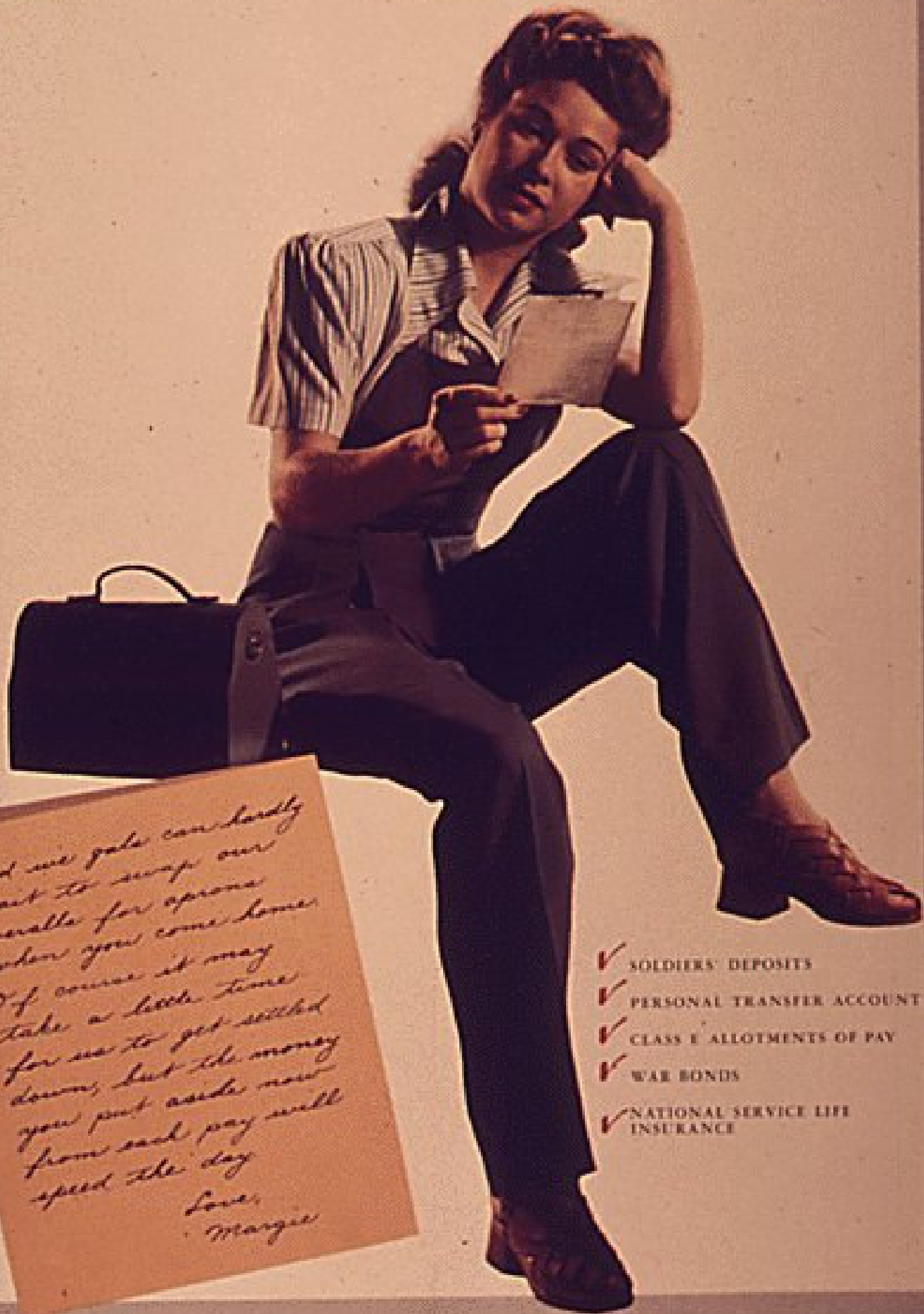
Love,  
Margie

- ✓ SOLDIERS' DEPOSITS
- ✓ PERSONAL TRANSFER ACCOUNT
- ✓ CLASS I ALLOTMENTS OF PAY
- ✓ WAR BONDS
- ✓ NATIONAL SERVICE LIFE INSURANCE

- ✓ SOLDIERS' DEPOSITS
- ✓ PERSONAL TRANSFER ACCOUNT
- ✓ CLASS E ALLOTMENTS OF PAY
- ✓ WAR BONDS
- ✓ NATIONAL SERVICE LIFE INSURANCE



your pipe and slippers  
 waiting; your own big,  
 comfortable, easy chair  
 ... So, that's what  
 you're dreaming of?  
 Well, soldier, save  
 every pay day so you'll  
 be all set to make  
 those dreams come true  
 when you get home,  
 for that's what we  
 girls are saving for  
 and dreaming of, too!  
 Loves  
 Margie



and we girls can hardly  
wait to swap our  
overalls for aprons  
when you come home.  
Of course it may  
take a little time  
for us to get settled  
down, but the money  
you put aside now  
from each pay will  
speed the day.

Love,  
Margie

- ✓ SOLDIERS' DEPOSITS
- ✓ PERSONAL TRANSFER ACCOUNT
- ✓ CLASS E ALLOTMENTS OF PAY
- ✓ WAR BONDS
- ✓ NATIONAL SERVICE LIFE INSURANCE



*Of course it's a honey of  
a gift, and you were  
sure to send it, but  
you know we girls  
don't need presents to  
remember you by. We'd  
much rather you  
save the money because  
when you come home  
there'll be so many  
important things you'll  
want it for.*

*Love,  
Margie*

- ✓ SOLDIERS' DEPOSITS
- ✓ PERSONAL TRANSFER ACCOUNT
- ✓ CLASS E ALLOTMENTS OF PAY
- ✓ WAR BONDS
- ✓ NATIONAL SERVICE LIFE INSURANCE



the home of your own  
you've always dreamed  
of. Of course waiting  
is hard -- don't I  
know! -- but you  
can start building  
right now, wherever  
you are, by putting  
aside money every  
day -- much better  
than just laying a  
foundation of star-  
dust!

Loves  
Margie

✓ SOLDIERS' DEPOSITS    ✓ PERSONAL TRANSFER ACCOUNT    ✓ CLASS E ALLOTMENTS OF PAY    ✓ WAR BONDS  
✓ NATIONAL SERVICE LIFE INSURANCE



your comfortable old tweeds  
are still hanging in the  
closet. Of course you  
always look wonderful  
to me, but when you  
come home fresh out of  
U. S. khaki you'll  
really want to cut a  
figure. That will take  
some shopping, and  
shopping will take  
some cash, so how  
about starting now to  
save for the big day?  
Love,  
Margie

- SOLDIERS' DEPOSITS
- PERSONAL TRANSFER ACCOUNT
- CLASS E ALLOTMENTS OF PAY
- WAR BONDS
- NATIONAL SERVICE LIFE INSURANCE

# LAST MAN OFF WAKE ISLAND



By LT. COL. WALTER L. J. BAYLER, USMC  
As Told to CECIL CARNES

**F**ROM the end of the U.S.A. Wright was directed to Pearl Harbor. I was gradually more than 1000 miles away from home. In two days, we were ordered to take the ship to Wake Island. The ship was a transport, and we were to land there and establish a base. We had about 100 men and some equipment, and we had to build a base with what tools and stores we had on the ship. We had no provisions, and we had to live on what we could find on the island.

A former top of concentration was the captured island of Wake Island, USMC, with his squadron. The island was officially designated as Wake Island, and it was to be the base for the U.S. Marine Corps. The island was a small, irregularly shaped island in the middle of the Pacific Ocean, and it was surrounded by dark water and white waves. The island was a small, irregularly shaped island in the middle of the Pacific Ocean, and it was surrounded by dark water and white waves.

With dark mountains and were the nature of our life. The island was a small, irregularly shaped island in the middle of the Pacific Ocean, and it was surrounded by dark water and white waves. The island was a small, irregularly shaped island in the middle of the Pacific Ocean, and it was surrounded by dark water and white waves.

# MARINE HEROES

## America will never forget

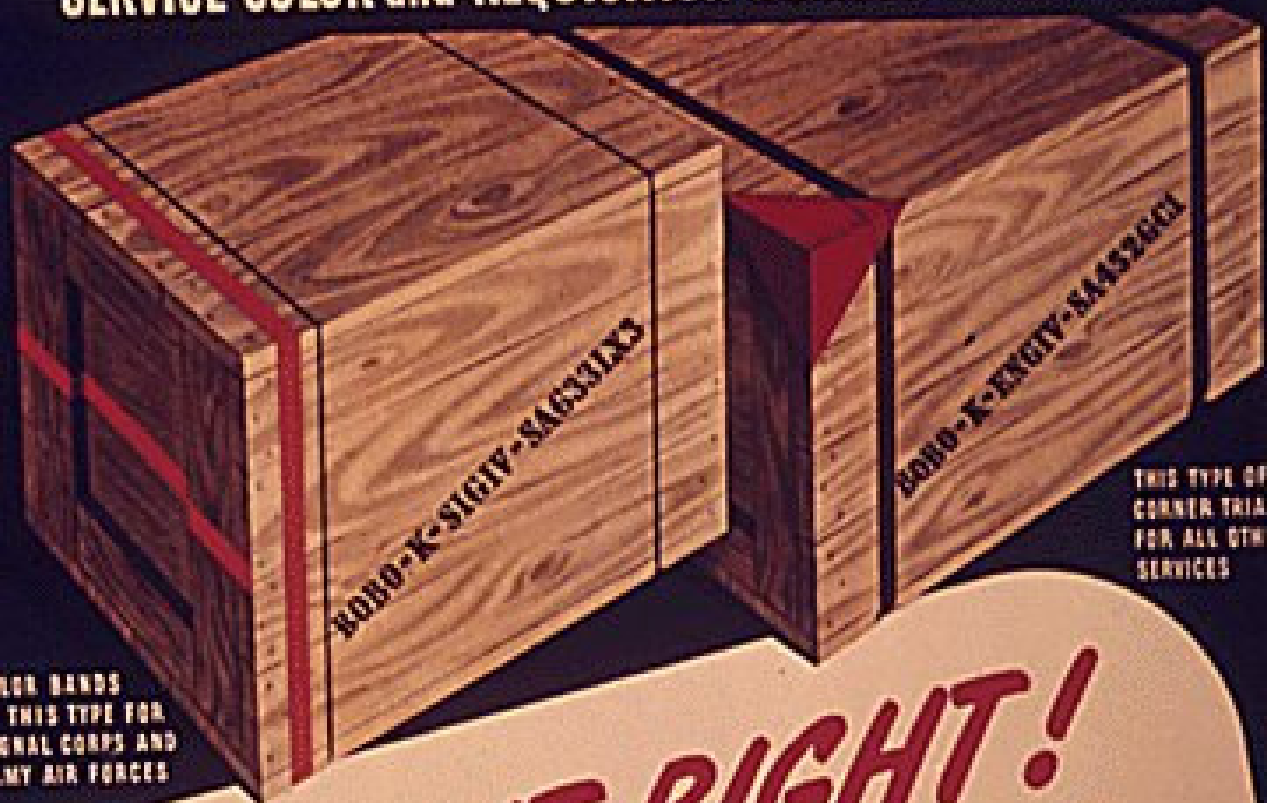


The author, who found Wake Island—the day before Pearl Harbor—beautiful and utterly deserted.

THE SATURDAY EVENING  
**POST**



**SERVICE COLOR and REQUISITION NUMBER MUST AGREE**



COLOR BANDS OF THIS TYPE FOR SIGNAL CORPS AND ARMY AIR FORCES

THIS TYPE OF CORNER TRIANGLE FOR ALL OTHER SERVICES

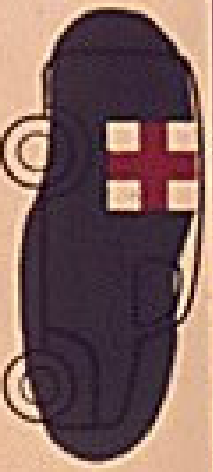
# MARK IT RIGHT!

- QUARTERMASTER CORPS
- TRANSPORTATION CORPS
- MEDICAL DEPARTMENT
- ORDNANCE DEPARTMENT
- CORPS OF ENGINEERS
- ARMY AIR FORCES
- SIGNAL CORPS
- CHEMICAL WARFARE SERVICE
- ARMY EXCHANGE SERVICE
- SPECIAL SERVICE DIVISION

1 - 99	
100 - 199	
200 - 299	
300 - 399	
400 - 499	
500 - 599	
600 - 699	
700 - 99	
800 - 899	
900 - 999	



# MARKINGS OF U. S. CHEMICAL MUNITIONS



**CASUALTY**

(PERSISTENT)

**GA55**



**CASUALTY**

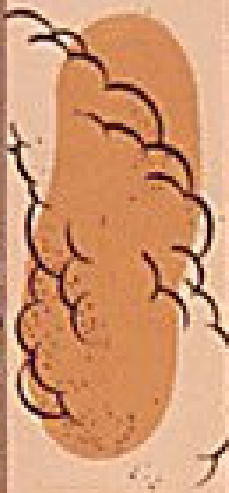
(NONPERSISTENT)

**GA55**



**HARASSING**

**GA55**



**SMOKE**

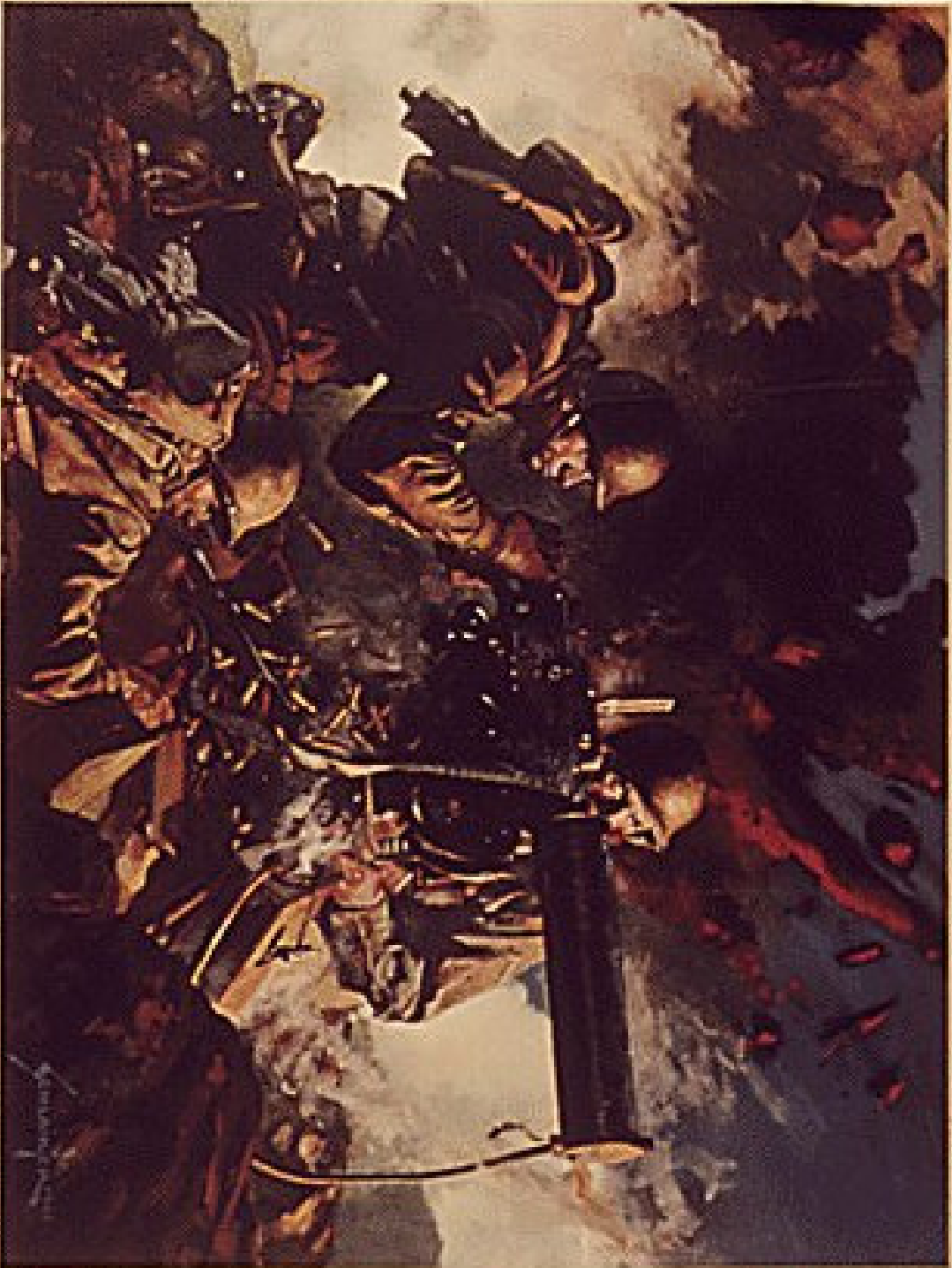
**SMOKE**



**INCENDIARY**

**INCEN**

# MATCH THEIR COURAGE...



WITH YOUR

*Responsibility*

OVERSEAS  
SHIPMENTS  
MUST BE  
MARKED RIGHT



THE ARMY MARKING  
SYSTEM IS EASY TO  
APPLY IF YOU FOLLOW  
INSTRUCTIONS



IF YOU DON'T KNOW  
ASK THE BOSS

THIS IS  
WHAT HAPPENS  
WHEN  
SHIPMENTS  
ARE MARKED  
WRONG—





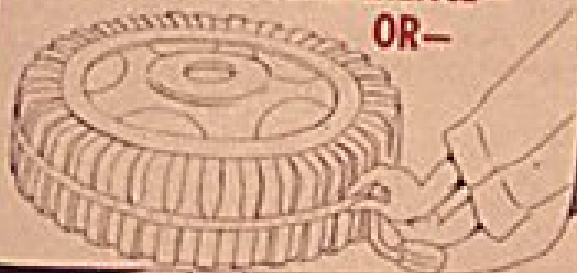
# MATCH YOUR TIRES!

HERE'S WHAT TO DO—

CHECK PRESSURE



MEASURE CIRCUMFERENCE—  
OR—



MEASURE  
DIAMETER



SAVE

- 1 Make sure tires are inflated to exact specified pressures before measuring.
- 2 Measure circumference of inflated tires with steel tape. (Keep tape on center of tread all around tire.)  
OR...Measure outside diameter of inflated tires with gage. Make sure gage is across exact center of wheel.
- 3 TIRES THAT DIFFER BY MORE THAN  $\frac{3}{4}$ " IN CIRCUMFERENCE OR  $\frac{3}{4}$ " IN DIAMETER DO NOT MATCH.
- 4 All tires on a 4x4 or 6x6 must always match (be within  $\frac{3}{4}$ " in circumference or  $\frac{3}{4}$ " in diameter of each other), and should have the same tread design.
- 5 When duals match, as they always must, but are slightly different in size, use larger tire as outside dual.
- 6 NEVER INSTALL TIRE WITHOUT MEASURING TO MAKE SURE IT MATCHES TIRES ALREADY ON VEHICLE.
- 7 Measure tires on vehicle frequently. Synthetic and recapped tires, especially, do not wear uniformly. Tires that are matched when installed may not remain that way long.
- 8 Spare tires become oversized if not used. Use them! Measure frequently to make sure they match tires on vehicle—exchange if they don't.
- 9 USE MATCHED TIRES ONLY ON YOUR VEHICLE. Unmatched tires wear rapidly—damage gears, axles, shafts.

# MAKE TIRES LAST

# MATERIALS ARE *PRECIOUS!*.. LET'S MAKE EVERY PIECE *COUNT!*

BOY, OH BOY!...  
THAT COULD BE SOME  
OF THE MATERIAL  
I'VE SAVED ON  
MY JOB!!

D'YA  
REMEMBER  
PEARL HARBOR,  
KID?!



ALEXANDER



MACARTHUR IS GIVING  
HIS ALL... *are you?*

*Me travel?*



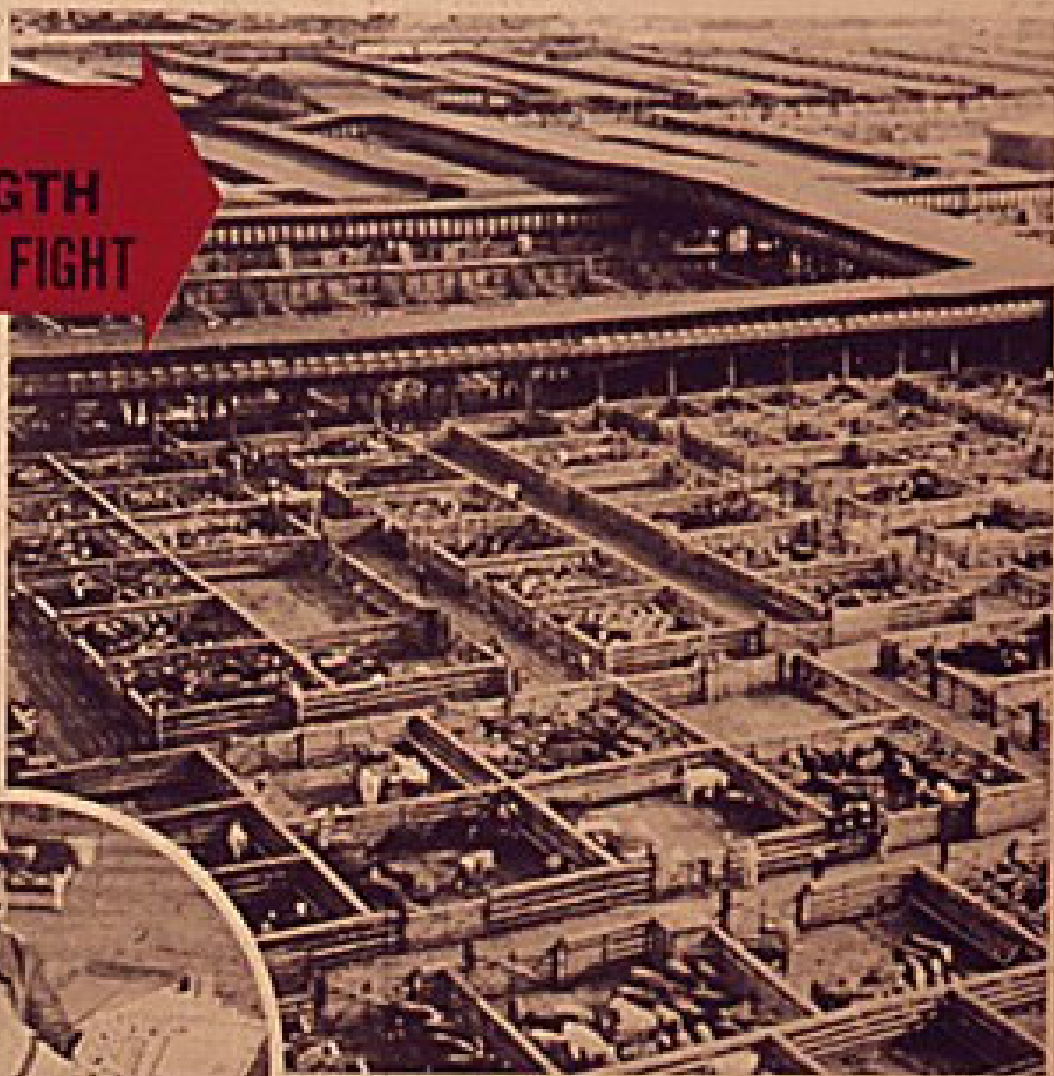
ALVIN  
SCOTT

*...not this summer*

**VACATION AT HOME**

OFFICE OF DEFENSE TRANSPORTATION

**MEAT** for  
**STRENGTH**  
to **WORK** and **FIGHT**



*Put part of every sale in*



**WAR BONDS**



# Meat Today:

## Learn more cuts



Whenever your meatman does not have your favorite cuts or kinds of meat he will be glad to help you select cuts which may be new to your table but which contain the same nutrients and which have that good meat flavor.

### MEAT AND MODERN NUTRITION

Since the last war meat has been discovered to be a source of essential B vitamins (thiamine, riboflavin and niacin).

Also there has developed a new appreciation of the complete high-quality proteins of meat as well as the minerals of meat (iron, copper, phosphorus).

These nutritional essentials are not stored in the body to any appreciable extent and must be supplied regularly by your daily meals.

Government officials who are concerned with the nutritional needs of the nation recommend meat as a regular part of the diet.

Both on fighting fronts and at home meat is considered important to good morale as well as to good nutrition. Few other foods so satisfy the "inner man."

Recognizing these facts, military meal planners endeavor to provide our fighters with nearly a pound of meat per man per day.

People just naturally want meat—both for the dinner pal and the home table.

Our fighters, our allies, our workers and our families need it. Make the most of it.

**KEEPING IT SHARING**—Under wartime it is the Government's plan that the American people shall all share in the benefits of meat.

**MEAT INDUSTRY PROGRESS**

How better could Mother's life be today had good beef not so abundantly increased! Actually, this year (June, 1941—July, 1942) the industry is producing a record breaking 24 billion pounds of meat, an increase over 20 billion pounds the previous year and only 10 to 12 billion pounds a year during the last war. Recently also the industry has produced one million tons of shipping cases with less scrap than all this has been done efficiently, and without government aid.

Our fighting forces, our allies and our workers need meat. The Government has asked consumers to limit their use of meat to 2 1/4 pounds per person per week.

There are two voluntary ways you yourself can help to stretch the available supply and still keep the good nutritional value of meat on the table.

1. Eat the cuts available from day to day.
2. Continue to serve meat as often as possible—even though you serve less per meal.

New consumers can make the most of meat by voluntary rationing and cooperate with the Government

► **Plan meals so your available supply of meat is well distributed over the week.** On the basis of 2 1/4 pounds per person, you can enjoy 28 to 33 nutritious and satisfying meals each per week.

► **In addition to the 2 1/4 pounds per week of beef, pork, lamb, veal, mutton, chicken and turkey—you can serve fish, seafoods, eggs, butter, fruits and beans.** (Since these items are not included in the voluntary rationing plan, they can be served such foods as poultry and fish.)

(All meat contains complete high-quality proteins, B vitamins and important minerals.)

► **Learn to make delicious dishes out of available cuts—even if you have never cooked these before.**

► **Your meat man knows meats, the use of good recipes for you. Ask him to help you.**

► **Get out your cookbooks. Go over them. You will find many ideas you have never tried.**

► **Keep your eye on the food pages of newspapers and magazines. Follow recipe suggestions.**

► **And be sure to get the booklets offered below. They tell you how to prepare many unfamiliar cuts. They tell you how to conserve meat by cooking at low, moist temperatures.**

*Serve meat regularly—as good nutrition demands—and remember: **Meat is a basic food—make every pound count!***

Now is the time to know more about the many available cuts and kinds of meat and how to prepare them



**Meat Helps for Rationing**

**1. Use "Meat Rationing Cards" to help you ration your meat.**

**2. Use "Meat Rationing Cards" to help you ration your meat.**

**3. Use "Meat Rationing Cards" to help you ration your meat.**

**4. Use "Meat Rationing Cards" to help you ration your meat.**

**5. Use "Meat Rationing Cards" to help you ration your meat.**

**6. Use "Meat Rationing Cards" to help you ration your meat.**

**7. Use "Meat Rationing Cards" to help you ration your meat.**

**8. Use "Meat Rationing Cards" to help you ration your meat.**

**9. Use "Meat Rationing Cards" to help you ration your meat.**

**10. Use "Meat Rationing Cards" to help you ration your meat.**

AMERICAN MEAT INSTITUTE, CHICAGO

**MEN of 18 and 19**



**NOW** you can choose  
your branch of service

**U.S. ARMY**

APPLY AT THE NEAREST

RECRUITING and INDUCTION STATION

CORPS of ENGINEERS  
MEDICAL DEPARTMENT  
QUARTERMASTER CORPS  
ORDNANCE DEPARTMENT  
INFANTRY • FIELD ARTILLERY  
ARMORED FORCE • CAVALRY  
SIGNAL CORPS • AIR FORCES  
CORPS of MILITARY POLICE  
CHEMICAL WARFARE SERVICE  
COAST ARTILLERY CORPS  
(AMPHIBIOUS • NAVAL DEFENSE)



**MEN!**

**38 - 45**

**YOU CAN SERVE IN THE  
U.S. COAST GUARD**

# **MEN TO FARM**

**FOOD** AND **FIBER** ARE NEEDED  
AS NEVER BEFORE TO **FEED**  
AND **CLOTHE:**

- 1. OUR ARMED FORCES**
- 2. OUR ALLIES**
- 3. OURSELVES**

**★ EVERY MEMBER OF THE FARM FAMILY MUST HELP!**

# **MEN** TO FIGHT THE AXIS



# **MEN** TO BUILD:



PLANES



TANKS

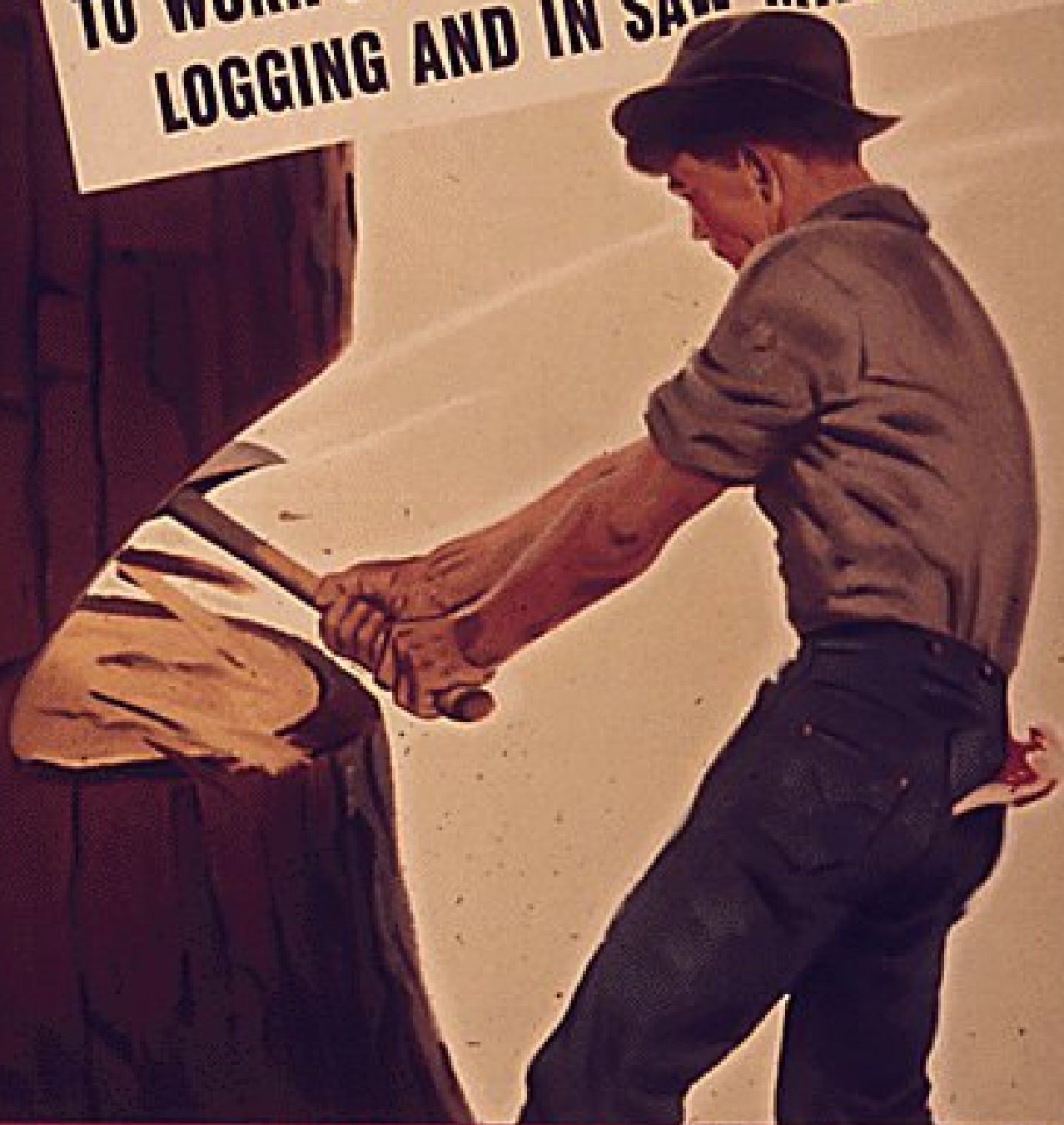


SHIPS



GUNS

**MEN WANTED** *TODAY*  
TO WORK ON PULPWOOD CUTTING,  
LOGGING AND IN SAW MILLS



**U.S. EMPLOYMENT SERVICE**  
WAR MANPOWER COMMISSION

# MEN WORKING

# TOGETHER!



MERCHANT SEAMEN

*Deliver*

*WHAT IT TAKES TO  
BLAST THE AXIS!*

**UNITED SEAMEN'S SERVICE**

in cooperation with WAR SHIPPING ADMINISTRATION



SERVES OUR FIGHTERS IN DUNGAREES  
WHEREVER UNITED STATES SHIPS CARRY  
GOODS TO ASSURE VICTORY



**USS** is a participant in the **NATIONAL WAR FUND**



# METAL

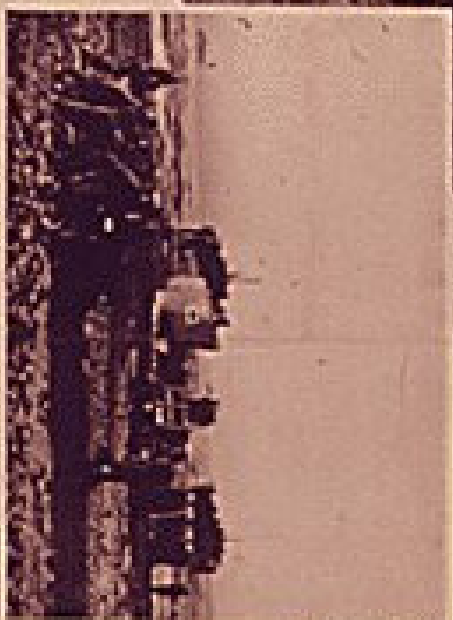
*at the Fighting Front*



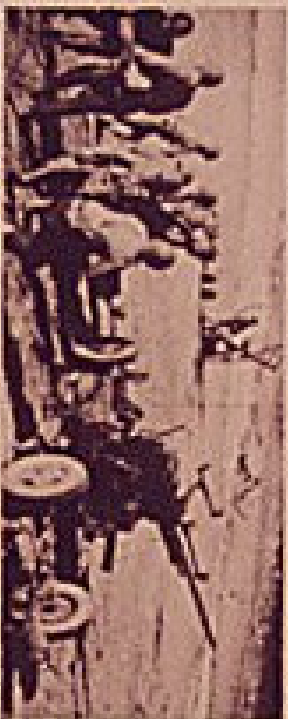
**POXHOLE EXCHANGE.** A soldier sabbily operates a machinegun over the trench during the recent fighting in North Africa—with helmet and rifle handy! Here are millions pounds of copper monthly for new ones that have our fighting fronts.



**SICILIAN INVASION STARTS!** Assault troops have! Biggles leads assault in a North African Port for the island of Sicily. Hundreds of tons built were used in the operation, and thousands of pounds of ammunition used. The steel work of them, too!



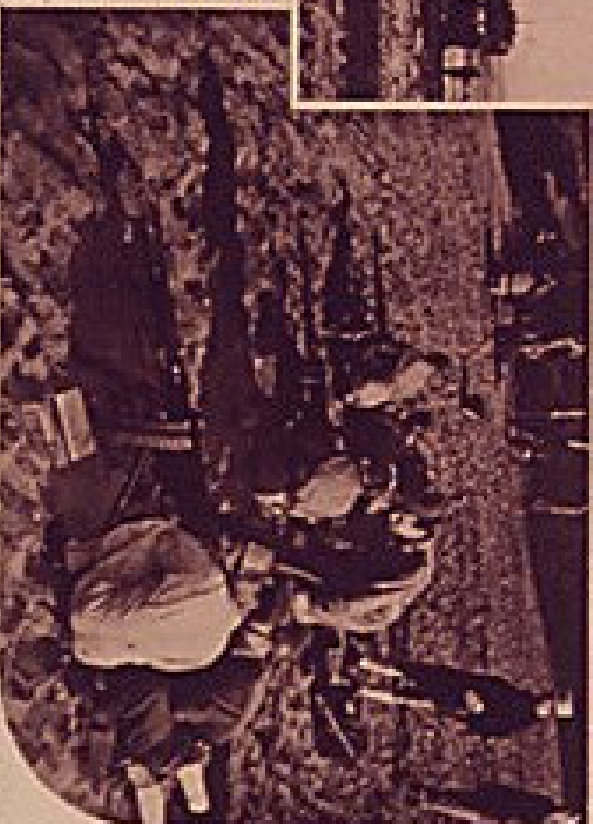
**THE YANKS LAND!** Men and machines pour ashore on Sicily under fire (with shell splashes behind landing barges). Behind the barges, jeeps, trailers, tanks, guns and ammunition rolls with your metals work thousands would not be under fire.



**ALBERTIAN AIR ALERT!** As the warping planes, soldiers in North Africa look to their guns—all soldiers machine guns in background. If you, our defense, you in front. It takes for the of our defense needs to make sure you the front, and every pound must be accounted.



U. S. ARMY  
OFFICIAL POSTER



**FIGHTING FRENCH** our Allies have been American pressure here to shoot our enemies! All soldiers machine guns. These show your gun and how you get off the of enemy, and you had in your hands. It's the job of our allies and ourselves to keep 'em shooting!

# METAL FOR VICTORY!

## *Keep it coming*



**AN ARMY MOVES** in its truck assembly line—each every 228 lbs. of modern metal. Thousands of these trucks are needed on every front.



**PASS THE AMMUNITION!** 7 1/2 lbs. of your modern metal go into each of these powerful, ammunition-laden trucks.



**WALKIE-TALKIES** keep the lines of command—radio open to better than the best in the Tropics. Thousands of these are used on every front.



**FLYING BOXCAR** loads supplies to hundreds. Even big transport units will be 228 lbs. of modern metal, every man and machine is kept in good shape. They've played a big part in our South Pacific conquests.



**LOOK OUT ZERO!** When a B-26 carrier's Double Gun club shoots over 10 lbs. of your metal a month. The heavy's guards against fuel burners and Turboprop Pumps.



**U. S. ARMY**

OFFICIAL DESIGN