

**READ 'EM
AND WEEP!**



**DON'T GAMBLE
WITH YOUR FUTURE!**

"READING BETWEEN THE LINES OF YOUR BLESSED LETTER..."

"Reading between the lines of your blessed letter, I feel again the warmth of your love, and your unshaken belief in our future together. Just to know there is still in the world such faith as yours is enough to keep me warm. Just to know that you somehow made a happy Christmas for the children is enough to keep hope alive.

"I shared your letter with the others. It's what they live for, too. The knowledge that our wives and mothers and sweethearts are keeping our homes together—while they help to forge the weapons that will some day set us free.

"Reading between the lines of your blessed letter, I know that once again the stars will hover over Tokyo, and bombers will fly so low we'll see the stars on their wings.

"So every day I look to the sky, waiting for them to come again. They will come—no one of us doubts that, ever. And my faith and hope in you keeps my head up and my heart high, while silently I pray for the day they'll come—to deliver us from evil—to bring me home to you again.

"Home—where I want unchanged, just as I remember them now, all the things


that I hold dear. The right of a man to think and speak his thoughts, the right of a man to live and worship as he wants, the right of a man to work and earn a just reward!

"Don't ever let them be lost. Keep everything just as it is until I come back... back to America where no armed guard bars the door to liberty... where there will never be a barbed wire fence between a man and his opportunity to work and build and grow and make his life worth living—this war worth winning!"

—NASH KELVINATOR CORPORATION, DETROIT

From their world and
with letters regularly
to fighting men at
home and overseas.



NASH  KELVINATOR

In War, Builders of Ford & White Engines and Hamilton Standard Propellers
In Peace, Truck, Automobile, Refrigerator, Refrigerators and Appliances.

The advertisement will list the

<p><small>NAME</small></p> <p><small>ADDRESS</small></p> <p><small>CITY</small></p> <p><small>STATE</small></p> <p><small>ZIP</small></p>	<p><small>NAME</small></p> <p><small>ADDRESS</small></p> <p><small>CITY</small></p> <p><small>STATE</small></p> <p><small>ZIP</small></p>	<p><small>NAME</small></p> <p><small>ADDRESS</small></p> <p><small>CITY</small></p> <p><small>STATE</small></p> <p><small>ZIP</small></p>
---	---	---



READY FOR ANYTHING

— thanks to you!

READY



JOIN
U.S. MARINES

LAND
SEA
AIR

APPLY, OR WRITE, TO NEAREST RECRUITING STATION

RECIPES FOR SAVING WASTE



CONSERVE and you SERVE UNCLE SAM

Turn off range when not in use.
Save water. Don't waste steam.
Turn off unneeded lights.
Don't let deep-fat temperatures get too high.
Overseasoning results in comebacks.
Use skim or condensed milk where possible.

Weigh portions.
Don't use aprons, etc. for cleaning.
Don't over-roast, overlook or burn.
Use ovens at full capacity.
Keep flame under pan, not up over edges.
Watch portion sizes.

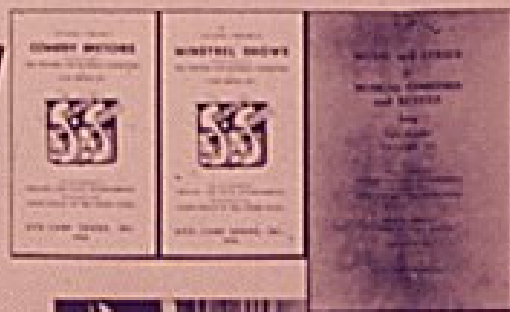
RECREATION and

ATHLETICS

Special Service issues athletic equipment through Service Commands and in kits for overseas troops. It also provides training manuals and instructional materials on athletics and physical conditioning.



Supplies for games, whether simple or requiring full equipment, are provided by Special Service.



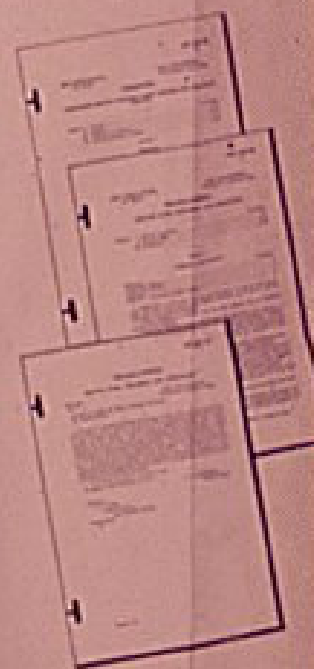
Publications and materials are issued to help produce good soldier plays, such as "The Women", illustrated above.



Army Motion Picture Units issue 800 theaters for soldiers and distribute films to them.

FACILITIES

Special Service designs, furnishes and equips buildings such as libraries, theaters, Service Clubs, and Guest Houses. It also supplies funds and issues regulations for control of hostesses and librarians.



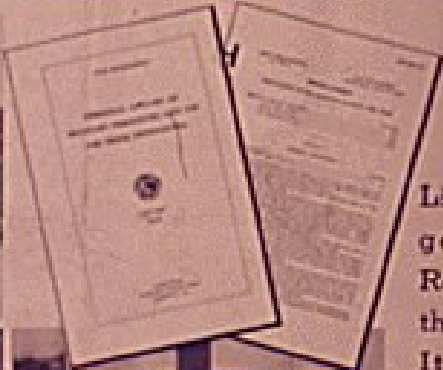
and **ATHLETICS**



Army Motion Picture Service operates 800 theaters for soldiers in the U.S.A. and distributes films to troops abroad.

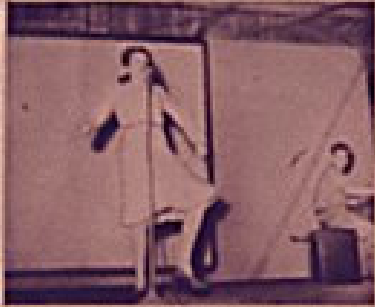
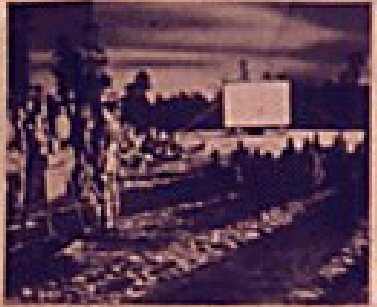


The routing of USO, Camp Shows, Inc., and other soldier entertainment is a responsibility of Special Service.



WELFARE

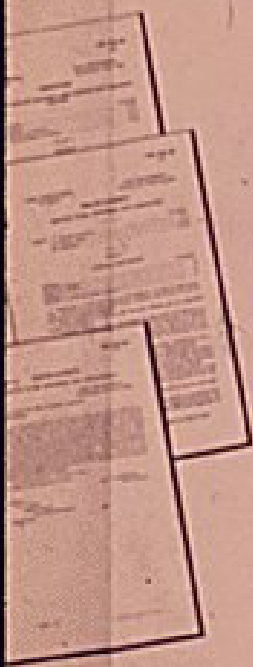
Liaison with civilian organizations, such as Red Cross and USO, is through Special Service. It issues regulations directing welfare and other allied services.



Men come to the Red Cross directors with personal problems relating to themselves and their families.

MUSIC

Special Service Officers, assisted by trained Music Officers, provide plans and materials for developing musical activities including training song leaders, organizing and training orchestras and bands.





BRITISH PRESS SERVICE

“Thanks America! We British held 'em off for a solid year. Now, together we'll blast the 'blighters' to pulp!”

PRODUCE FOR VICTORY!



"The stuff our soldiers need is comin' . . . *but fast!* We're workin' like *hell* to give them everything they need to beat the livin' daylights out of those _____!"

PRODUCE FOR VICTORY!



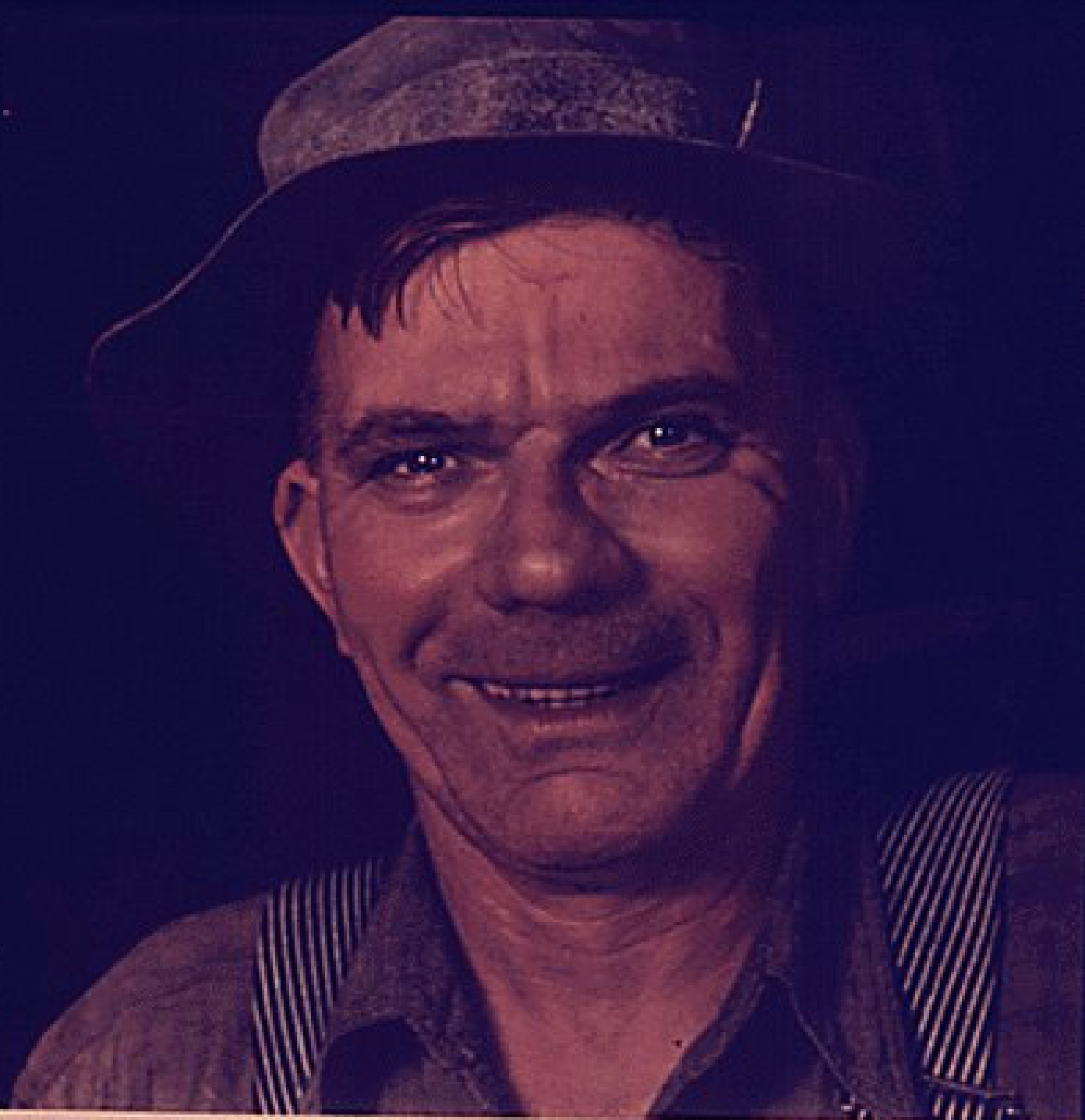
"This is everybody's war. The enemy has made it so. May you never know what it means to be a refugee...to be hungry...to be homeless. *Be sure this never happens to you!*"

PRODUCE FOR VICTORY!



"WE, the Americans of today, know our duty to the Americans of yesterday and the Americans of tomorrow. WE shall keep the fires of freedom burning."

PRODUCE FOR VICTORY!



"We're doing a good job. Sure! But 'good' isn't enough. We've got to do our job so damn well that the enemy will never know what hit them..."

PRODUCE FOR VICTORY!



“We’re doing it! We’re showing the whole cockeyed world what it means when America rolls up its sleeves and goes to work!”

PRODUCE FOR VICTORY!



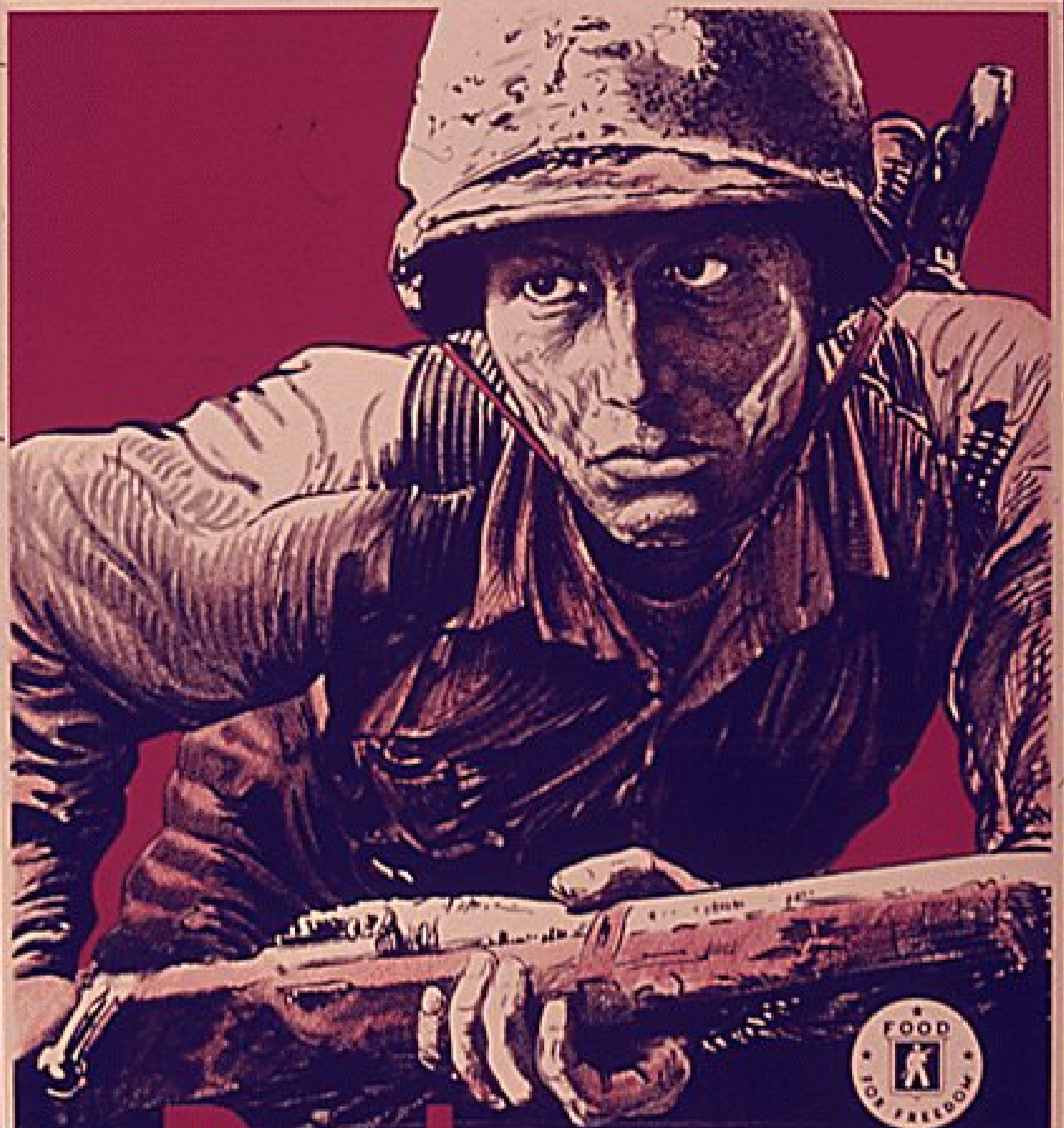
"Yesterday, I was a free French worker. Today, I am the slave of the invader. Believe, mon Americain, nothing is important but to keep your freedom—to produce, to build tanks, planes, guns. Destroy the enemy who would take your freedom. For your sake—for God's sake—

PRODUCE FOR VICTORY!



"You make 'em, buddy . . . we'll use 'em . . . and how! We're all soldiers together. Our victories in battle come right after your victories in production."

PRODUCE FOR VICTORY!



Produce more
MILK for HIM

UNITED STATES DEPARTMENT OF AGRICULTURE
OFFICE OF MILK PROMOTION

PRODUCE



A GARDEN & ORCHARD



CHICKENS



A FEW COWS



PIGS



STORE



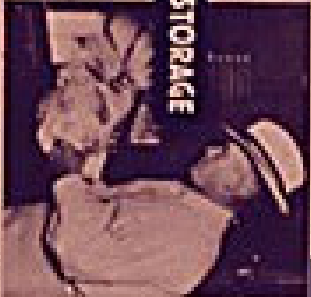
DOWN THE CELLAR



IN THE CAN



IN THE SMOKEHOUSE



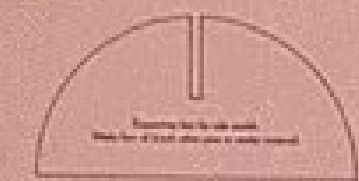
IN COLD STORAGE



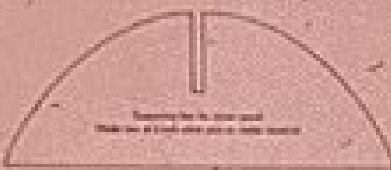
Little Exhibits, Nutrition—Set Two

1. A woman in a kitchen is shown preparing food. The text describes the process of preparing food in a kitchen, mentioning the use of a stove and the importance of proper food handling.

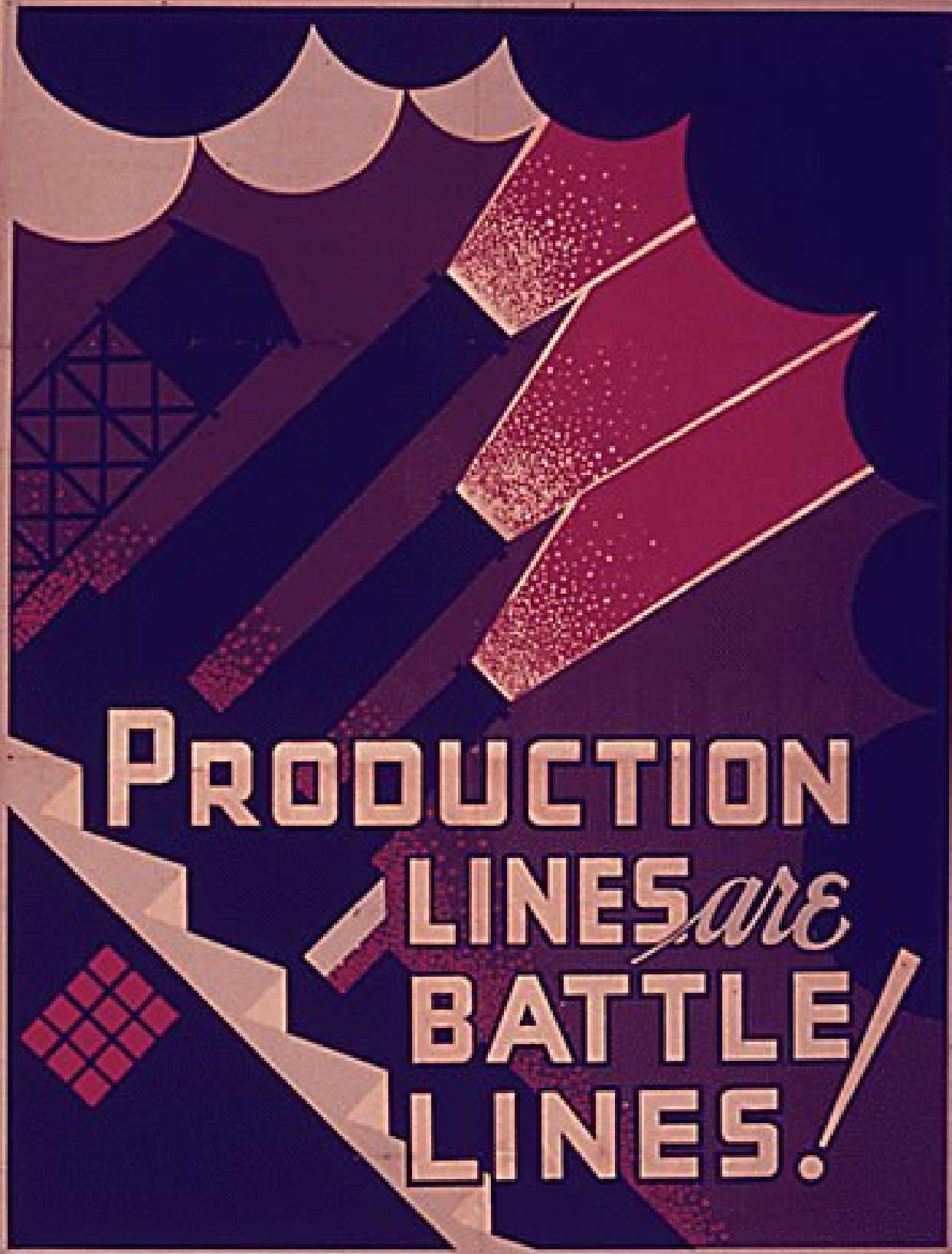
2. A woman in a cellar is shown handling produce. The text describes the process of handling produce in a cellar, mentioning the use of barrels and the importance of proper storage.



Preparing the food in the kitchen. Make sure it is cooked properly in a smoke house.



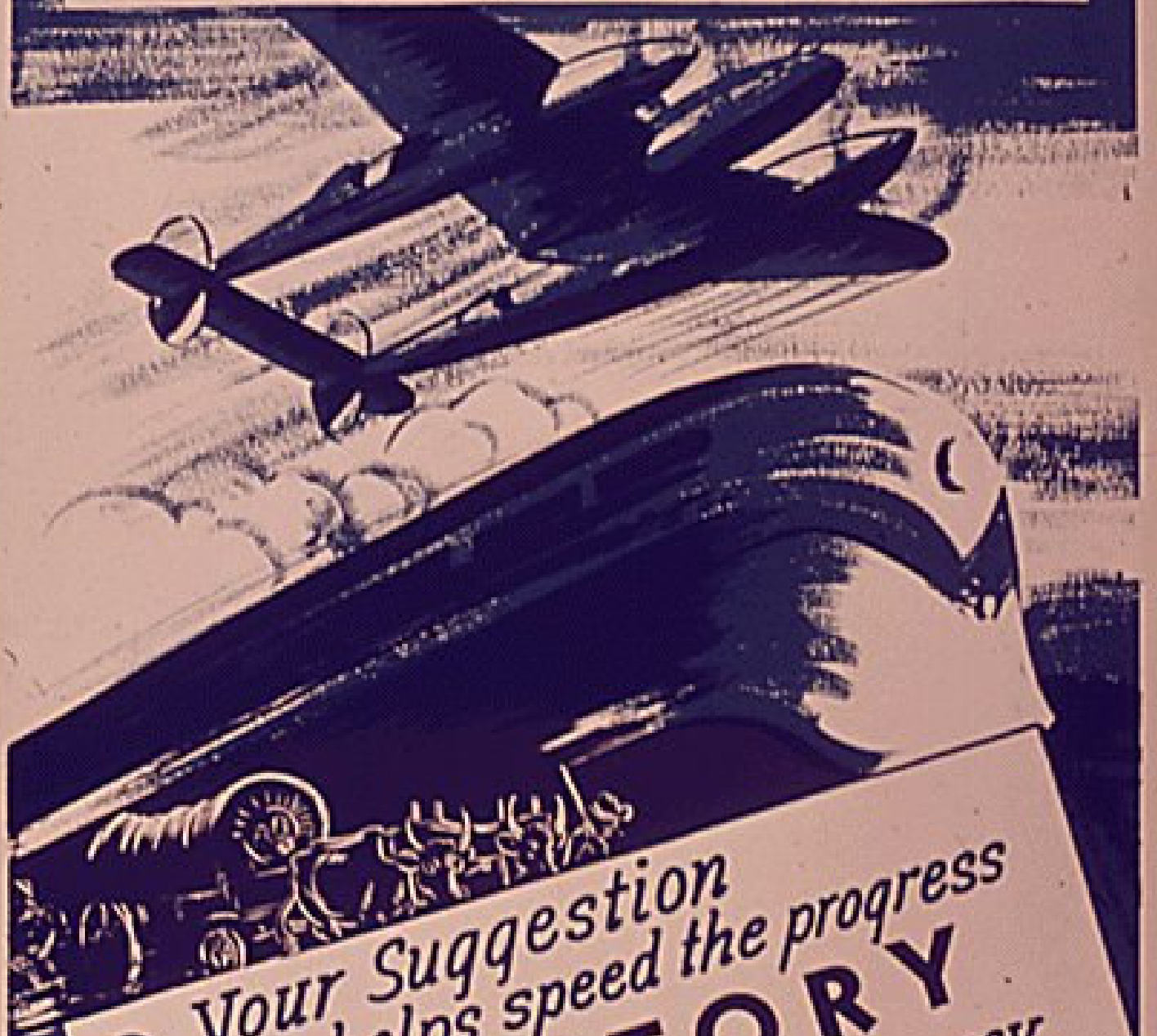
Preparing the food in the kitchen. Make sure it is cooked properly in a smoke house.



PRODUCTION
LINES *are*
BATTLE
LINES!

POSTER ISSUED BY DIVISION OF INFORMATION OF W.P.B. AND O.E.M.
MATERIALS COURTESY AERO TOOL CO, BURBANK, CALIF. ... DESIGNED, CONTRIBUTED BY CHES COBB OF THE
HOLLYWOOD WRITERS MOBILIZATION... .. W.P.A. SO. CALIF. ART PROJECT

PROGRESS



- Your suggestion helps speed the progress of **VICTORY**
- You can save time money. effort and eliminate waste...

**SUGGEST
NOW!**





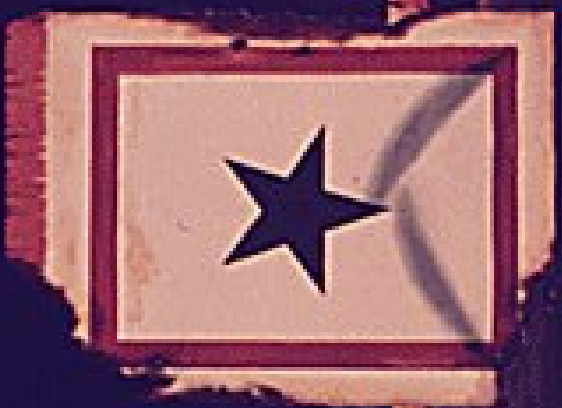
PROPER HARVESTING PAYS

Sell Crooked and Low Value Trees for Ties, Posts, and Fuel

U. S. Department of Agriculture

Forest Service

Protect his America!



Only you can
PREVENT
FOREST FIRES



**PROTECT
HIS
FUTURE**

RUTH NICHOLS

BUY AND KEEP WAR BONDS

Prostitution



spreads Syphilis and Gonorrhoea

PROTECT TIRES

VALVE CAPS

- keep dirt out of valves*
- seal air in tires ...*



VALVE CAP ALL TIRES ALWAYS

PROTECT

YOUR FAMILY

FROM FIRES

NEVER LEAVE SMALL CHILDREN ALONE AT HOME!

TELL THE MANAGEMENT IF—

- heater or stove doesn't burn right
- fuel leaks
- flues are not tight
- you don't know how to operate your heater or stove
- electric wiring is faulty
- fuses "blow"
- you don't know how to use your fire extinguisher

IN CASE OF FIRE—PHONE . . .

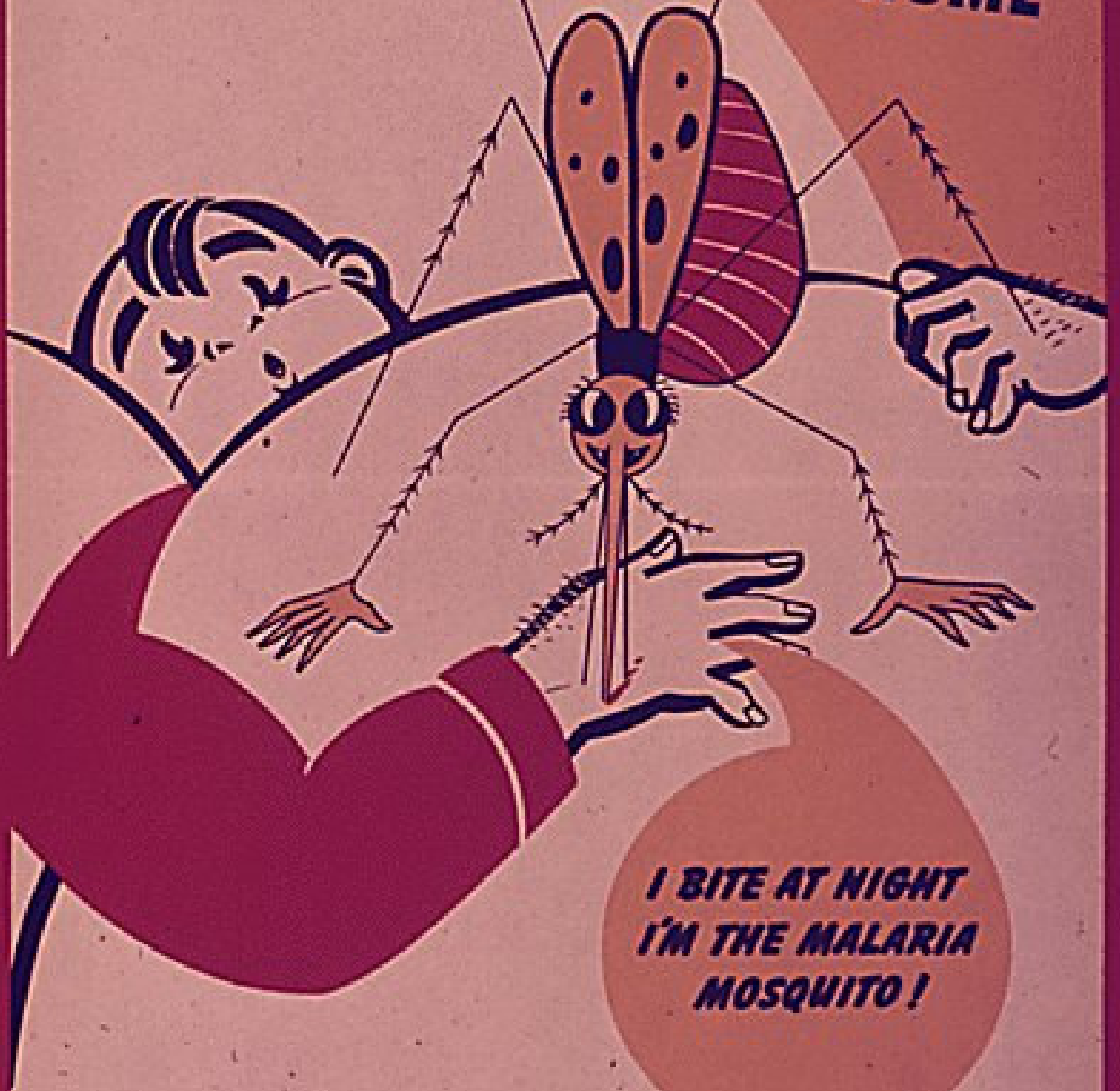
PROTECT
your **EYES**



MAINTAIN A PROPER

DIET

PROTECT YOURSELF MOSQUITO PROOF YOUR HOME



***I BITE AT NIGHT
I'M THE MALARIA
MOSQUITO!***

PROTECT YOUR SMALL ARMS



Use These -



They fit your cartridge belt

Clean and Oil Regularly

These preparations do the job every time. Ask your supply sergeant for them. Always clean after firing and for three successive days thereafter. Clean and oil wet or dirty weapons at once to prevent rust.

Handle and Ship Carefully

Never drop, bang, or throw weapons. Don't tinker or try unauthorized repairs and adjustments. BEFORE STORING OR SHIPPING, apply compound, rust-preventive, light. Store in a dry place, and in shipment, pack weapons individually in the crate. Never shove together.

THERE'S NO EXCUSE FOR WEAPON ABUSE

PROTECTION


in a bottle

A man wearing a military helmet is shown from the chest up. He is applying a substance from a small bottle to his face with his right hand. His left hand holds the bottle. An arrow points from the text below to the bottle. The background is a plain, light color.

USE YOUR INSECT REPELLENT AS DIRECTED!

FIGHT THE PERIL BEHIND THE LINES

Pull down your shades!



**SAVE
UP TO 10%
ON FUEL!**

30% OF ALL HEAT-LOSS
IS THRU WINDOWS. YOUR CLOTH
WINDOW SHADES CAN REDUCE
THIS LOSS MORE THAN 1/2!

WHAT TO DO



DRAW SHADES
TO FULL IN
ALL ROOMS
NOT USED
IN DAYTIME



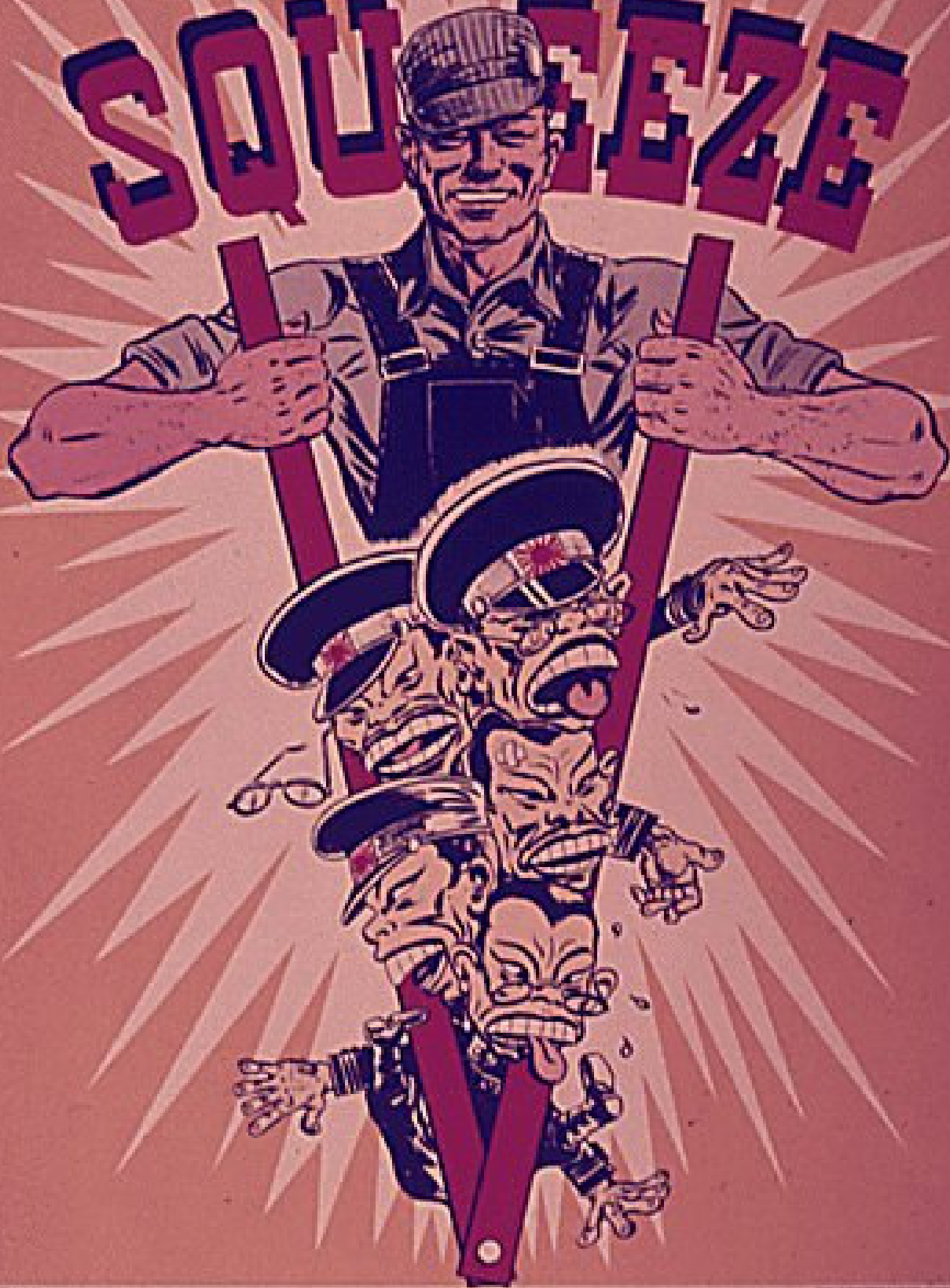
DRAW SHADES HALF
WAY IN ROOMS
USED IN DAYTIME



DRAW SHADES
TO FULL
IN ALL ROOMS
AT
NIGHT

SPONSORED BY
WINDOW SHADE INSTITUTE
FOR
U. S. GOVERNMENT

PUT ON THE
SQUEEZE



***ELECTRIC MOTORS ARE Vital
IN OUR WAR PROGRAM!***

Put out your Smokes!



FOR MEAT —

PREVENT RANGE FIRES

PUT THE SQUEEZE ON THE JAPANESE



BEAT YOUR PROMISE

Forest Fires Aid the Enemy



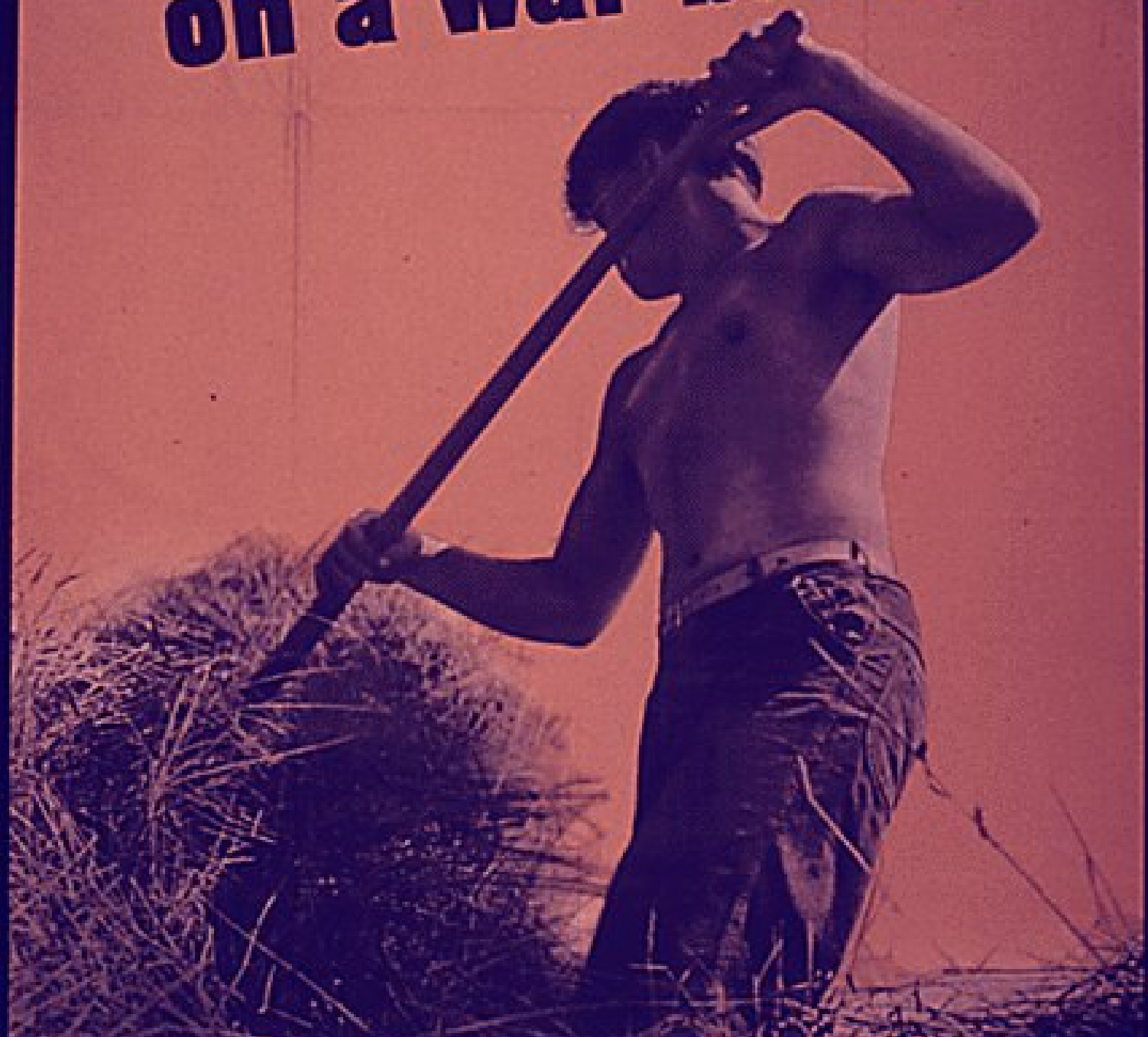
Put Your Ashes IN EARTH

U. S. DEPT. AGRICULTURE, FOREST SERVICE

STATE FOREST SERVICE

U. S. GOVERNMENT PRINTING OFFICE: 1944

**Put your muscle
on a war basis!**



SIGN UP FOR A FARM JOB
...at your local U.S. Employment Office

QUACKPOT

I'M A RAMBLIN' WRECK
FROM DAILY NEGLECT
AND A HELLUVA 4x4



TREAT A TRUCK RIGHT
--- THIS WAY



- 1 Load your vehicle correctly to avoid damage from overloading and load shifting
- 2 Warm-up your engine at a moderately fast idle before you drive away
- 3 Show you are an expert driver by starting smoothly and shifting silently
- 4 Shift to a lower gear when necessary to avoid straining the engine
- 5 Take it easy on the brakes—no skidding on turns, and don't ride the clutch

DAILY CARE SAVES WEAR!

Little things like checking tires, lubricants, batteries, brakes, and cooling systems save big repair jobs. Always perform the daily preventive maintenance service listed on the back of your Driver's Trip Ticket and P. M. Service Record—W. B. Form 48.



QUACKPOT

MAINTENANCE

CARELESSNESS DESTROYS ELECTRICAL EQUIPMENT



The Right Way To Use Electrical Equipment



Be sure electrical equipment is in working order before you use it on. Take it off when it isn't needed. Use it strictly according to TM instructions.



Wash electrical equipment in alkaline. Rinse it carefully. Keep it clean and dry. Give it thorough lubrication, but be careful not to over-lubricate.



Test electrical equipment frequently for accuracy. Use only qualified tests, parts, and supplies when repairing. Keep contacts clean, well lubricated.



Use correct fuses only. Replace old equipment like meters, instruments, radios, telephones and generators in regular times. Take good care of it.

• • • There's a shortage of field wire, assault wire, and dry batteries. HELP SAVE THEM! • • •

QUICK ACTION



United States

COAST GUARD

DON'T WAIT - JOIN TODAY!

QUIET!



LOOSE TALK

CAN COST LIVES

Albion

A

**QUIET
PLEASE**

**WAR
WORKER
RESTING**

RADIO INSTRUCTION COURSE

CHART NO. 3 - FUNDAMENTALS OF THE VACUUM TUBE

SECTION 19 - EMISSION



HEAT AND EMISSION
The filament in a vacuum tube is heated to a high temperature. This causes the atoms in the filament to vibrate. Some of these atoms have enough energy to break free from the surface of the filament. This process is called thermionic emission.



CONTROLLING THERMIONIC EMISSION
The amount of thermionic emission can be controlled by the temperature of the filament. A higher temperature results in more emission, while a lower temperature results in less emission.



EMITTER CATHODE
The filament in a vacuum tube is called the emitter cathode. It is the source of electrons. The electrons are attracted to the positively charged plate.



HEAT LOSS
The filament in a vacuum tube loses heat to the surrounding environment. This heat loss is a major factor in the design of the filament.

SECTION 20 - THE DIODE TUBE

TWO-POLE DEVICES



RECTIFICATION
The diode tube is used for rectification. It allows current to flow in one direction but blocks it in the other direction.



RECTIFICATION
The diode tube is used for rectification. It allows current to flow in one direction but blocks it in the other direction.



RECTIFICATION
The diode tube is used for rectification. It allows current to flow in one direction but blocks it in the other direction.



RECTIFICATION
The diode tube is used for rectification. It allows current to flow in one direction but blocks it in the other direction.

SECTION 21 - THE TRIODE TUBE

THREE-POLE DEVICES



AMPLIFICATION
The triode tube is used for amplification. It increases the amplitude of an input signal.



AMPLIFICATION
The triode tube is used for amplification. It increases the amplitude of an input signal.



AMPLIFICATION
The triode tube is used for amplification. It increases the amplitude of an input signal.



AMPLIFICATION
The triode tube is used for amplification. It increases the amplitude of an input signal.

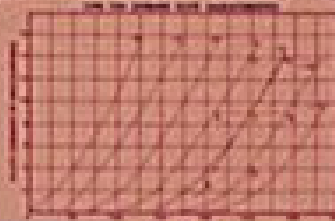
SECTION 22 - READING RADIO TUBE CURVES

HOW TO READ A CHARACTERISTIC CURVE

When you read a characteristic curve, you are looking at the relationship between the grid voltage, the plate current, and the plate voltage. The grid voltage is the voltage applied to the control grid. The plate current is the current flowing from the plate to the cathode. The plate voltage is the voltage applied to the plate.

CHARACTERISTIC CURVES

When you read a characteristic curve, you are looking at the relationship between the grid voltage, the plate current, and the plate voltage. The grid voltage is the voltage applied to the control grid. The plate current is the current flowing from the plate to the cathode. The plate voltage is the voltage applied to the plate.



HOW TO READ A CHARACTERISTIC CURVE

When you read a characteristic curve, you are looking at the relationship between the grid voltage, the plate current, and the plate voltage. The grid voltage is the voltage applied to the control grid. The plate current is the current flowing from the plate to the cathode. The plate voltage is the voltage applied to the plate.

When you read a characteristic curve, you are looking at the relationship between the grid voltage, the plate current, and the plate voltage. The grid voltage is the voltage applied to the control grid. The plate current is the current flowing from the plate to the cathode. The plate voltage is the voltage applied to the plate.

SECTION 23 - THE PENTODE TUBE

FIVE-POLE DEVICES



AMPLIFICATION
The pentode tube is used for amplification. It increases the amplitude of an input signal.



AMPLIFICATION
The pentode tube is used for amplification. It increases the amplitude of an input signal.



HOW TO READ A CHARACTERISTIC CURVE



AMPLIFICATION
The pentode tube is used for amplification. It increases the amplitude of an input signal.

SECTION 24 - BEAM POWER TUBE

HOW TO READ A CHARACTERISTIC CURVE



AMPLIFICATION
The beam power tube is used for amplification. It increases the amplitude of an input signal.



AMPLIFICATION
The beam power tube is used for amplification. It increases the amplitude of an input signal.

SECTION 25 - CONVERTERS

HOW TO READ A CHARACTERISTIC CURVE



AMPLIFICATION
The converter tube is used for amplification. It increases the amplitude of an input signal.



AMPLIFICATION
The converter tube is used for amplification. It increases the amplitude of an input signal.



Prepared by the Educational Staff
SYLVANIA ELECTRIC PRODUCTS INC.





RADIOGRAM

TO MEN OF 18 AND 19 . . .

NEW ENLISTMENT PRIVILEGES

. . . IN

- CORPS OF ENGINEERS • MEDICAL DEPARTMENT
- QUARTERMASTER CORPS • ORDNANCE DEPARTMENT
- INFANTRY • FIELD ARTILLERY • ARMORED-FORCE
- CAVALRY • SIGNAL CORPS • AIR FORCES
- CORPS OF MILITARY POLICE • CHEMICAL WARFARE SERVICE
- COAST ARTILLERY • CORPS (Aeronautics) • Harbor Defense

U.S. ARMY

RECRUITING AND INDUCTION STATION

For more information, see page 100, "The Army," in this issue.

APPLY NOW AT ANY





RAILROAD WAGE ORDER

(TRUNKLINES AND SHORTLINES)

Every employee employed by a railroad or a company engaged in allied operations as defined below shall be paid a wage of

NOT LESS THAN **40¢** AN HOUR

on and after August 31, 1942. The term "employee" includes Red Cap porters. Violating employers may be fined \$10,000 for each offense. They may be imprisoned for six months (except in cases of first offenders). Discrimination against any employee for filing a suit or complaint is a violation. Complaints may be filed with any regional, branch, or field office of the Wage and Hour Division, or through the National Office, 165 West 46th Street, New York, N. Y. Employees may sue and recover twice the amount due them.

DEDUCTIONS

"Wage" paid to any employee includes the reasonable cost, as determined by the Administrator, to the employer of furnishing such employee with board, lodging, or other facilities, if such board, lodging, or other facilities are customarily furnished by such employer to his employees. The term "reasonable cost" is to be not more than the actual cost to the employer of the board, lodging, or other facilities.

Reasonable cost does not include a profit to the employer or to any affiliated person.

The term "wage" shall not include the cost of uniforms and of their laundering or other maintenance thereof where the occupation requires the employee to wear the uniform.

DEFINITION

For the purpose of this order, the term "Railroad Carrier Industry" means:

The industry carried on by any express company, sleeping car company or carrier by railroad, subject to Part 1 of the Interstate Commerce Act, and by any company which is directly or indirectly owned or controlled by one or more such carriers or under common control therewith, and which operates any equipment or facility or performs any service (except trucking service, canal service and the casual operation of equipment or facilities) in connection with the transportation of passengers or property by railroad, in the receipt, delivery, elevation, transfer in transit, refrigeration or icing, storage, or handling of property transported by railroad, and

by any receiver, trustee, or other individual or body, judicial or otherwise, when in the possession of the property or operating all or any part of the business of any such company or carrier by railroad. *Provided, however,* That the term "railroad carrier industry" shall not include the industry carried on by any street, interurban, or suburban electric railway, unless such railway is operating as a part of a general steam-railroad system of transportation, but shall not exclude any part of the general steam-railroad system of transportation now or hereafter operated by any other motive power.

This notice shall be posted within thirty (30) days from the effective date of the Railroad Wage Order and maintained continuously in readable condition on all the usual and customary bulletin boards giving information to employees, and at all tool boxes and supply rooms and at such other places as may be necessary to make it accessible to all employees. This notice which supersedes the previous notice for this industry, effective March 5, 1942, is not to be hidden by other papers or otherwise obscured from view.

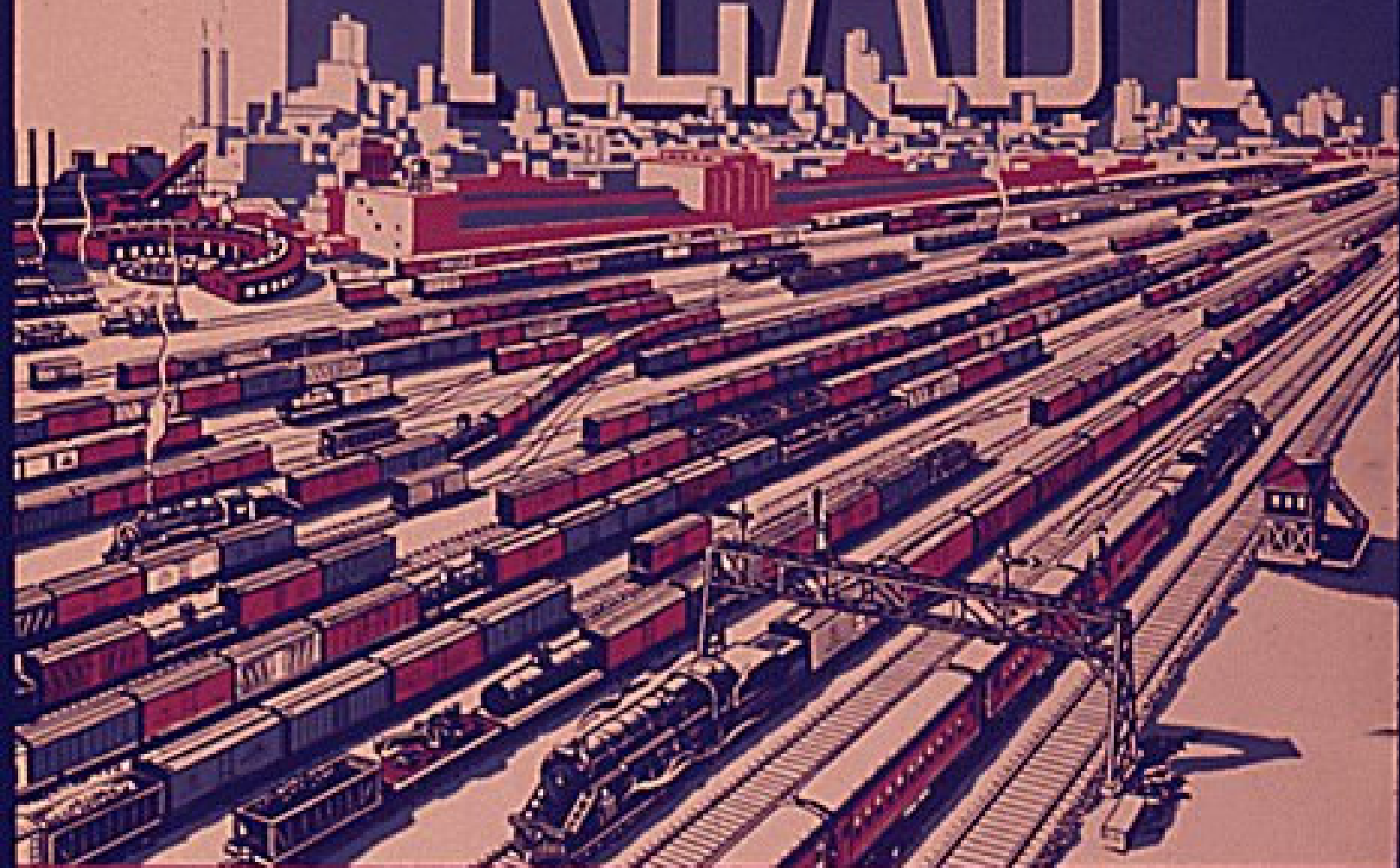

THOMAS F. HIGGINS
SECRETARY OF LABOR


L. KENNETH WALLING
ADMINISTRATOR

RAILROADS ARE



READY



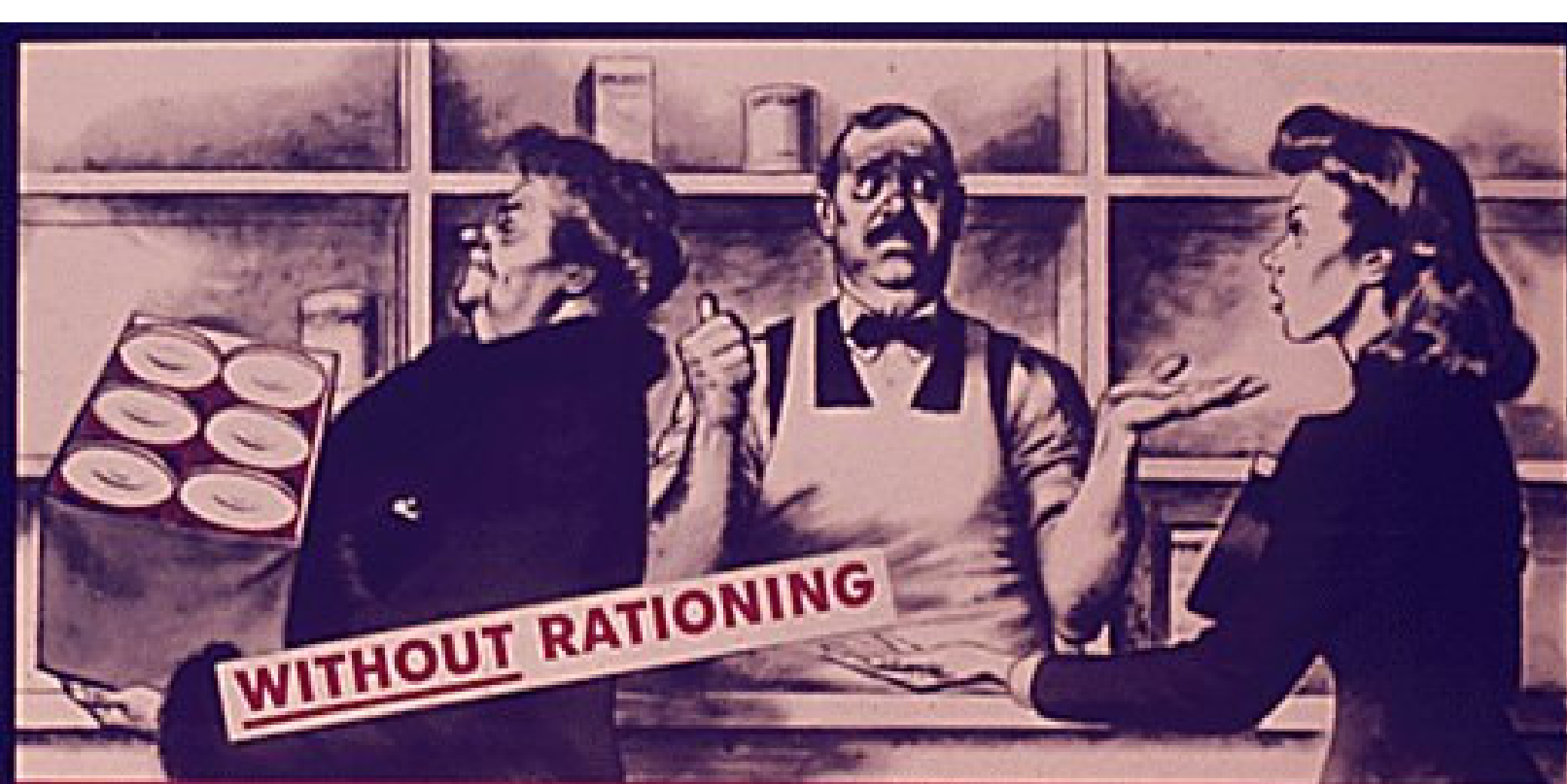
**READY - NOW - TO MEET THE NATION'S NEEDS
FOR MODERN MASS TRANSPORTATION**

ASSOCIATION OF AMERICAN RAILROADS

RATIONING

IS SHARING

**With Our Fighters
and Neighbors**



Rationing means
a fair share for all of us





RATIONING MEANS A FAIR SHARE FOR ALL OF US



Office of Price Administration
Washington, D. C.



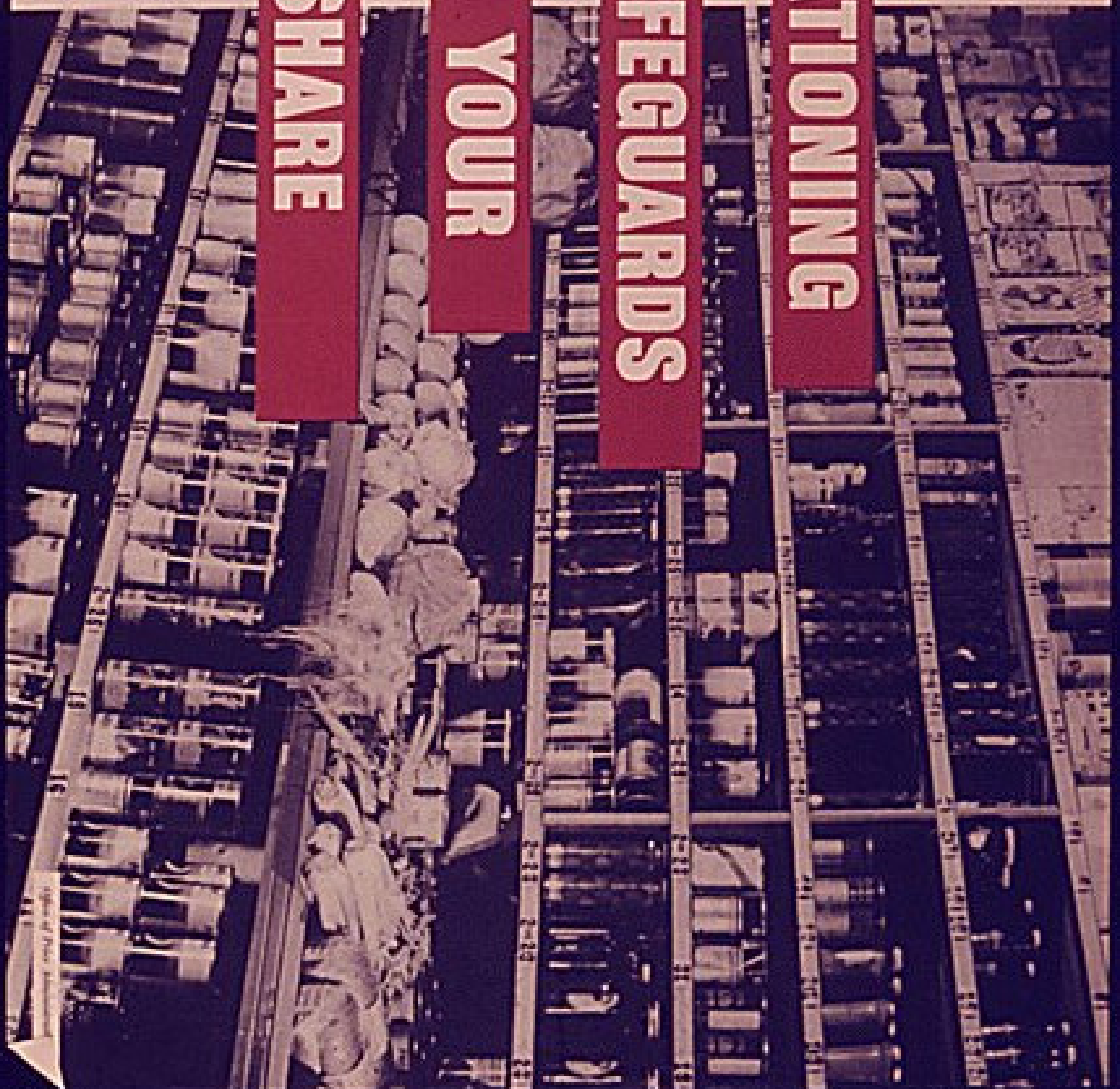


RATIONING

SAFEGUARDS

YOUR

SHARE



© 1942 THE UNITED STATES GOVERNMENT

Reach Your Boy **OVERSEAS**

by

Mail

the letters
that travel on film

EASY TO USE

SUREST —

FASTEST —

and MOST

PATRIOTIC

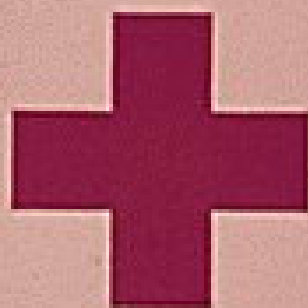


SCHLAIN

V Your Stationer and Post Office have
... — MAIL LETTER FORMS

Bathers

Swimmers



Campers
Canoeists

READ AND HEED!

When enjoying health-giving water sports, always observe a code of safe conduct.

Avoid long swims after a season of inactivity; train gradually.

Take a boat along for distance swimming.

Every community needs a safe swimming place provided with simple equipment, where regulations can be enforced.

Regular hours for bathing under competent supervision should be observed.

Swimming is the first water sport to learn; it makes the others safe.

After eating, wait at least two hours before swimming to avoid dangerous stomach cramps.

Failure to look before diving causes many deaths. Be sure the water is at least eight feet deep, and free from hidden stumps and rocks.

Every swimmer needs a water buddy to help him, or give the alarm in case of accident. Don't swim alone.

The prone pressure method is a most effective means of reviving a drowning person. Do not wait for a doctor or machine--go to work at once.

You can help the cause of water safety by observing sane regulations and teaching them to others.

Boom Water Sports by Being Careful

Ask Your Local Red Cross Chapter About Water Safety, Rescue and Resuscitation Methods

THE AMERICAN NATIONAL RED CROSS