

# V MAIL IS SPEED MAIL



**YOU WRITE  
HE'LL FIGHT!**



V-MAIL STATIONERY — 10¢ TO 30¢ PACKAGES

SPONSORED BY OFFICE OF MAIL INFORMATION, RESEARCH, AND COMMITTEE ON ARMS AND NAVY V-MAIL

# V...-MAIL



to be **SURE!**

PC 3-1-575-11-0-508

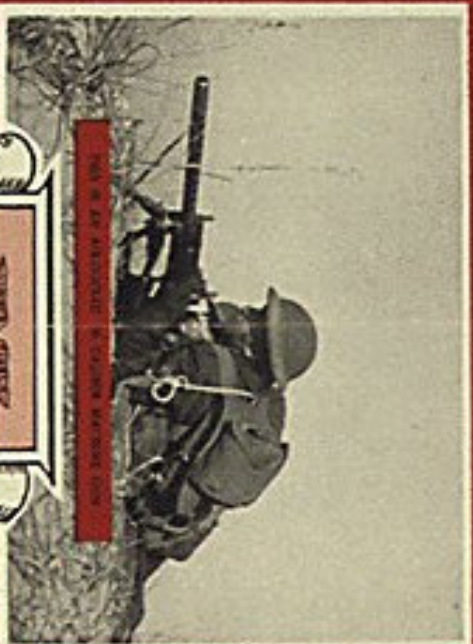




# U.S. MARINES HAVE A JOB TO DO



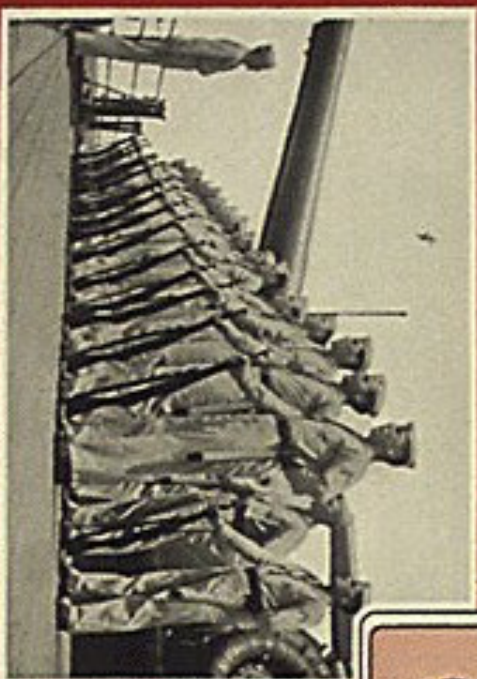
THOSE PLAY AN IMPORTANT PART IN THE MARINE CORPS



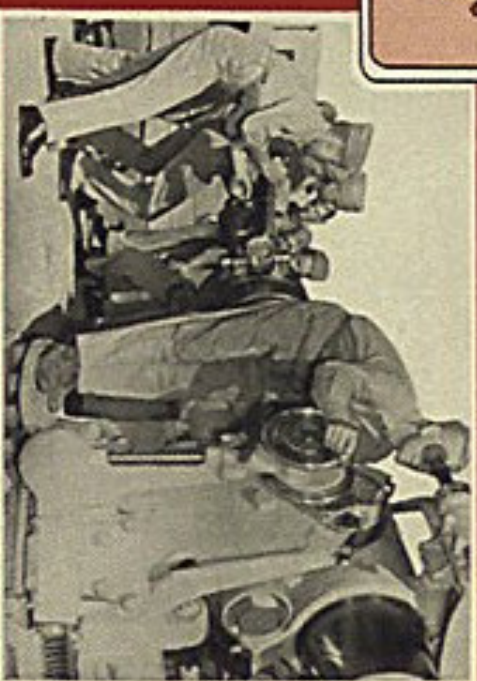
ONE OF AN ASSAULT COMPANY MARINES



THE EXPERIENCED HAVE THEIR OWN MODERN AIR ARMS



COLLECTIVE PART OF MARINE CORPS



THE MARINE CORPS HAS THE MODERN AIR ARMS

YOU CAN HELP BY ENLISTING TODAY

U.S. means US,  
soldier...



IT'S *Ours* PROPERTY...  
LET'S TAKE CARE OF IT!

SAVI





# U.S. NAVY STEPS IN ADVANCEMENT

FROM APPRENTICE SEAMAN TO CHIEF PETTY OFFICER

APPRENTICE SEAMAN	FIREMAN SEAMAN	SEAMAN SEAMAN	THIRD CLASS SEAMAN	SECOND CLASS SEAMAN	FIRST CLASS SEAMAN	CHIEF SEAMAN
\$50	\$54	\$56	\$78	\$96	\$114	\$126-\$133
<p><b>MACHINIST'S MATE</b>  <b>WATER TENDER</b>  <b>BOILER MAKER</b>  <b>MOTOR MACHINIST'S MATE</b>  <b>ELECTRICIAN'S MATE</b></p> <p><b>BOATSWAIN'S MATE</b> (in land command)  <b>TURRET CAPTAIN</b> (in land command)  <b>GUNNER'S MATE</b>  <b>TORPEDOMAN'S MATE</b>  <b>QUARTERMASTER</b>  <b>SIGNALMAN</b>  <b>FIRE CONTROLMAN</b>  <b>MINE MAN</b></p> <p><b>AVIATION PILOT 2c, 1c and CHIEF</b>  <b>AVIATION MACHINIST'S MATE</b>  <b>AVIATION ELECTRICIAN'S MATE</b>  <b>AVIATION RADIO MAN</b>  <b>AVIATION RADIO TECHNICIAN</b>  <b>AVIATION METALSMITH</b>  <b>AVIATION ORDNANCEMAN</b>  <b>PARACHUTE RIGGER</b>  <b>AIRSHIP RIGGER</b>  <b>AEROGRAPHER'S MATE</b>  <b>PHOTOGRAPHER'S MATE</b></p> <p><b>METALSMITH</b>  <b>MOLDER</b>  <b>RADIOMAN</b>  <b>RADIO TECHNICIAN</b>  <b>TELEGRAPHER</b>  <b>RADARMAN</b>  <b>SONARMAN</b>  <b>CARPENTER'S MATE</b>  <b>PAINTER</b>  <b>PATTERNMAKER</b>  <b>SHIPFITTER</b>  <b>SPECIAL ARTIFICER</b> (in land command)  <small>SPECIAL ARTIFICER—METALLURGICAL</small>  <small>SPECIAL ARTIFICER—OPTICAL</small>  <small>SPECIAL ARTIFICER—SYNTHETIC SERVICES</small></p> <p><b>SHIP'S COOK</b>  <b>BAKER</b></p> <p><b>YEOMAN</b>  <b>STOREKEEPER</b>  <b>PRINTER</b>  <b>SPECIALIST</b> (in land command)  <small>ATHLETIC INSTRUCTOR</small>  <small>CLASSIFICATION OFFICER</small>  <small>FILE MASTER</small>  <small>HEADQUARTERS CLERK</small>  <small>INSTRUCTOR</small>  <small>POSTOFFICE CLERK</small>  <small>MAIL</small>  <small>INSPECTOR OF BOOK MATERIAL</small>  <small>PHOTODUPLICATION</small>  <small>COMMUNICATIONS</small>  <small>RECORDED</small>  <small>TRAINING PERSONNEL SUPERVISOR</small>  <small>TEACHER OF LEAD TRAINING INSTRUCTOR</small>  <small>UTILITY</small>  <small>TRANSPORT CLERK</small>  <small>COMPLAINANT ASSISTANT</small>  <small>ESSENTIAL SPECIALIST NOT COVERED BY ANY EXISTING RATE</small>  <small>CONTROL TOWER OPERATOR</small></p> <p><b>SHIP'S SERVICEMAN</b> (in land command)  <b>BARBER</b>  <b>COBBLER</b>  <b>LAUNDRY</b>  <b>TAILOR</b></p> <p><b>MUSICIAN</b>  <b>BUGLEMASTER</b>  <b>PHARMACIST'S MATE</b></p> <p><b>COOK</b>  <b>STEWARD</b></p>						

STEWARDS: MAT 3, 2, 1c

THIS CHART HAS NOT BEEN Laid OUT IN ORDER OF PRECEDENCE OF RATINGS. SEE BUPERS MANUAL, PART D, CHAPTER 5, ART. 5182

**U.S. NEEDS US STRONG**



**EAT NUTRITIONAL FOOD**

**DO YOUR PART IN THE NATIONAL NUTRITION PROGRAM**

Office of Defense Health and Welfare Services, Washington, D. C.

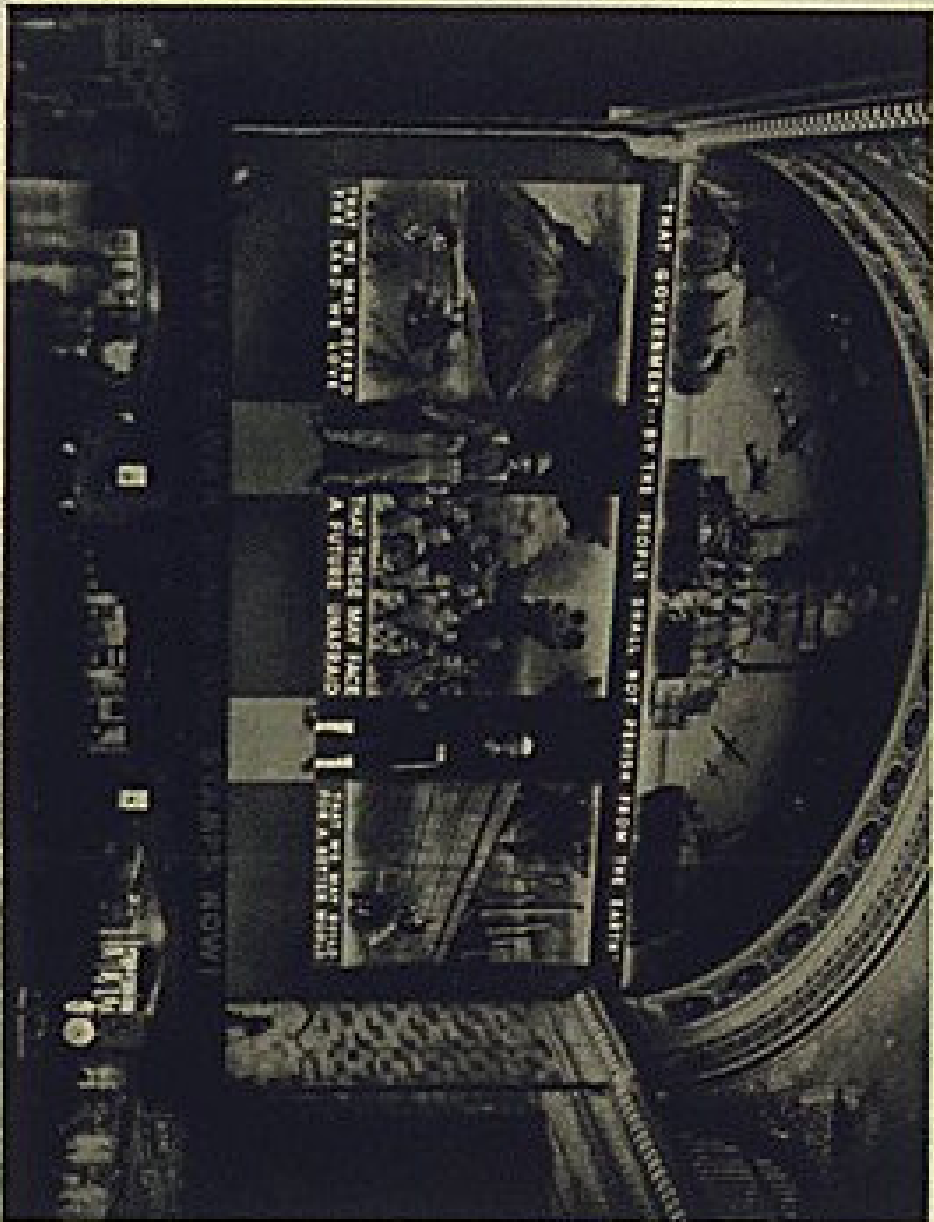
★

# U. S. TREASURY



# NEWS BULLETIN

★



New York, N. Y.—Hundreds of thousands view world's largest photo mural recently "unveiled" with floodlights at Grand Central Terminal, New York City. Covering the entire wall of the east wing, the mural, measuring nearly 100 ft. high, is a panorama of "Our America," our farms, industries and people. An inspiring sight to the more than 100,000 who pass daily through the main concourse of the station. It acts as a constant reminder of the things we are fighting for. So, too, does the flag!

"Buy U. S. War Bonds and Stamps" serve to remind us of the one sure way we all can help to win the war.



Buy United States WAR  
BONDS & STAMPS

*For Victory*



★ ★ U.S. ★ ★  
**WAR SAVINGS  
STAMPS HERE**



**OFFICIAL AGENCY**  
**STAMP**

# UNEXPLODED BOMBS

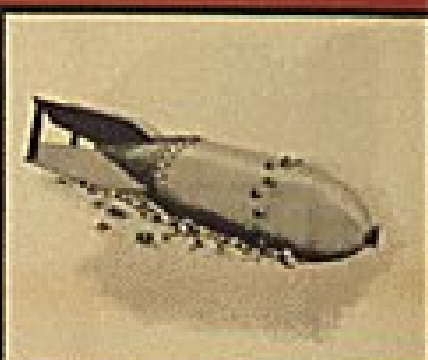
## HOLE OF ENTRY

A BOMB DROPPED FROM A PLANE WILL USUALLY LEAVE A HOLE IN THE GROUND WHERE THE BOMB ENTERED. SIZE OF HOLE AND ANGLE OF PENETRATION ARE IMPORTANT TO THE BOMB DISPOSAL OFFICER. DO NOT DESTROY THIS EVIDENCE!



## UXB ON SURFACE

IN LOW-LEVEL ATTACKS BOMBS WHICH DO NOT EXPLODE OFTEN SLEEP AND ARE FOUND LYING ON THE SURFACE OR SLIGHTLY BURIED. THESE BOMBS ARE DANGEROUS. THEIR EXPLOSION WILL CAUSE GREATER DAMAGE THAN A BURIED BOMB.



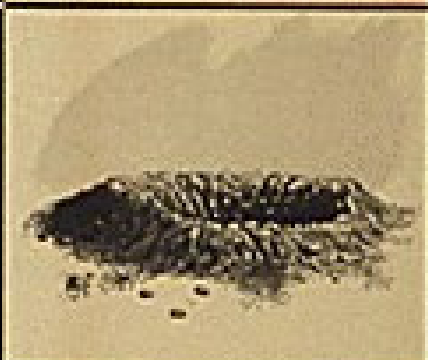
## FALSE CRATER

LARGE UNEXPLODED BOMBS OFTEN MAKE A HOLE OF ENTRY SIMILAR TO CRATER MADE BY EXPLOSION OF A SMALL BOMB. STEEP SIDES, LITTLE DEBRIS AROUND THE HOLE, AND NO SIGNS OF BLAST MAY INDICATE A LARGE UXB.

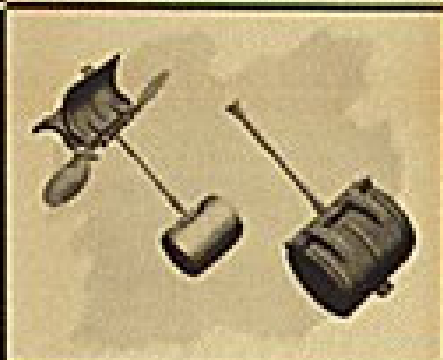


## CRATER

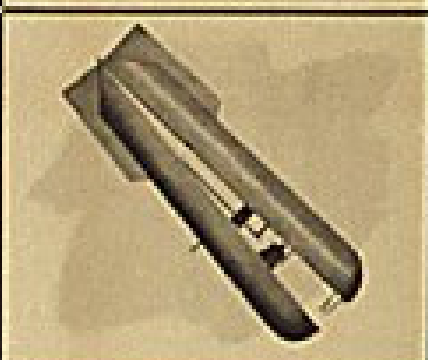
AN EXPLODING BOMB FORMS A FUNNEL-SHAPED CRATER WITH RAISED EDGES; DEBRIS WILL BE SCATTERED WIDELY AROUND THE CRATER; LEAVES MAY BE STRIPPED FROM TREES AND BUSHES; FRAGMENTS WILL BE FOUND IN OR NEAR CRATER.



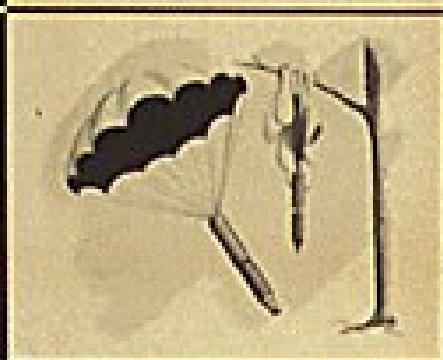
## BUTTERFLY BOMB



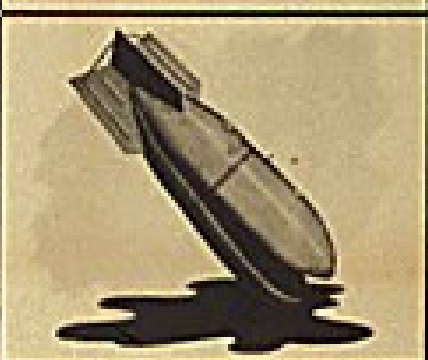
## BOMB CONTAINER



## PARACHUTE FRAG BOMB



## OIL INCENDIARY BOMB



***YOUR***  
**JOB IS**

- 1 RECOGNIZE THESE UNEXPLODED BOMBS AS DANGEROUS OBJECTS.
- 2 MARK THE LOCATION; AND LEAVE ALONE!
- 3 REPORT TO SUPERIOR OFFICER.

# UNITED STATES ARMY Decorations



## Service Medals



**REGULATIONS AS TO ORDER OF PRECEDENCE**

1. Medal of Honor
2. Distinguished Service Medal
3. Distinguished Service Cross
4. Silver Star
5. Distinguished Flying Cross
6. Purple Heart
7. Campaign Medals (in order of date of issue)
8. Service Medals
9. Badges
10. Ribbons



**GENERAL MEDALS**

1. Medal of Honor
2. Distinguished Service Medal
3. Distinguished Service Cross
4. Silver Star
5. Distinguished Flying Cross
6. Purple Heart
7. Campaign Medals
8. Service Medals
9. Badges
10. Ribbons

# UNITED STATES ARMY INSIGNIA

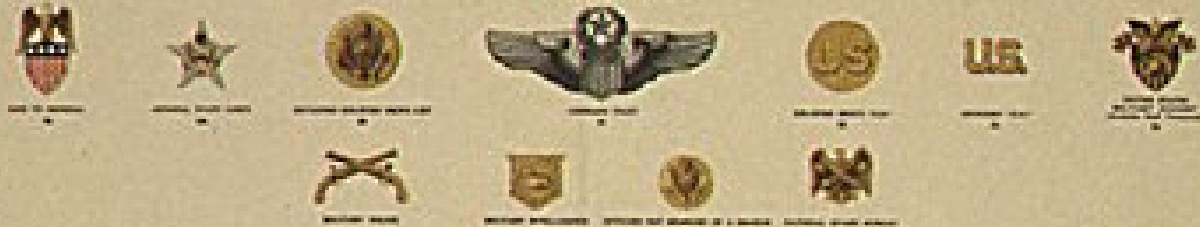
## The Arms



## The Services



## Miscellaneous



## Commissioned Officers' Insignia of Rank



## Cap Insignia



## Enlisted Men's Insignia of Rank and Service



These insignia are used to denote the rank and service of enlisted men in the United States Army. The chevrons are worn on the sleeves of the uniform, and the symbols are placed on the chevrons to indicate the specific rank and service. The rank of Private is denoted by a single chevron, and the rank of Sergeant Major is denoted by a chevron with a wreath. The service insignia are placed on the chevrons to indicate the branch of service, such as Infantry, Cavalry, or Artillery.



The cap insignia are used to denote the branch of service of the officer. The crest with the eagle is used for the Infantry, the crest with the wreath is used for the Cavalry, the crest with the shield and eagle is used for the Artillery, and the winged figure is used for the Engineers. The circular emblem with the eagle is used for the Medical Department.





# UNITED STATES COAST GUARD

## INSIGNIA AND GENERAL ETIQUETTE

\* SALUTES SHALL BE EXCHANGED BETWEEN OFFICERS AND BETWEEN OFFICERS AND ENLISTED MEN ON EVERY OCCASION OF THEIR MEETING, PASSING NEAR OR BEING ADDRESSED. FOR EXCEPTIONS, CONSULT YOUR BUREAU'S MANUAL. SENIORS SHALL ALWAYS SALUTE FIRST. WHEN SEVERAL OFFICERS IN COMPANY ARE SALUTED, ALL SHALL RETURN THE SALUTE. . . . .

\* SALUTES AND OTHER MARKS OF RESPECT DUE THEIR RANK SHALL BE EXTENDED TO OFFICERS OF THE NAVY, ARMY AND MARINE CORPS, TO FOREIGN MILITARY AND NAVAL OFFICERS WHOSE GOVERNMENTS ARE RECOGNIZED BY THE GOVERNMENT OF THE UNITED STATES AND, WHEN ON ACTIVE DUTY, TO OFFICERS OF THE ARMY, NAVY AND MARINE CORPS RESERVE AND THE NATIONAL GUARD. . . . .

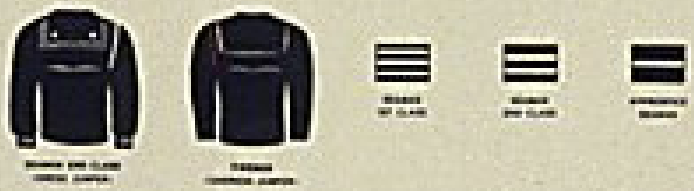
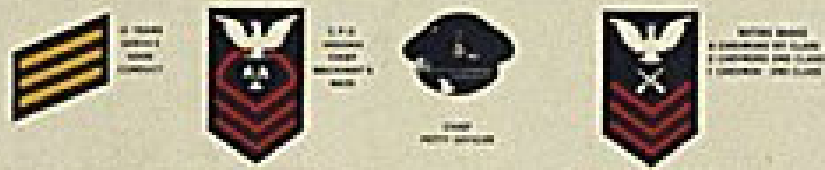
### COMMISSIONED OFFICERS (LINE)



### WARRANT OFFICERS



### PETTY OFFICERS - SPECIALTY MARKS



UNITED STATES ARMY

# PROTECT PRODUCTION

PRODUCTION WILL WIN THE WAR...



## SAFETY PRECAUTIONS

- ✓ 1. While carrying a loaded revolver keep your muzzle out of the cylinder so that hammer will not on the empty chamber.
- ✓ 2. Always UNLOAD every time revolver is picked up. Every gun is loaded until proved otherwise. Never trust your senses.
- ✓ 3. Always point your revolver down range when carrying in other situations.
- ✓ 4. Never point the revolver at anyone you do not intend to shoot, nor in a direction where an accidental discharge may be fatal.
- ✓ 5. Before loading, open the cylinder and look through the hole to see that it is free from obstructions.
- ✓ 6. Never have anyone at the firing point while you hold a loaded revolver in your hand; you can kill someone.
- ✓ 7. In case of a "misfire" point to 15 feet, re-priming your revolver, keeping the muzzle pointed down range.
- ✓ 8. Do not leave the firing line without orders and see that you have opened the cylinder of your revolver and ejected all cartridges.

DO NOT PLAY WITH HIDDEN DEATHS

<p>1</p> <p>Always carry your revolver with the muzzle out of the cylinder. This is the only safe way to carry a loaded revolver.</p>		<p>4</p> <p>The muzzle should be pointed down range at all times. This is the only safe way to carry a loaded revolver.</p>	
<p>2</p> <p>Always carry your revolver with the muzzle out of the cylinder. This is the only safe way to carry a loaded revolver.</p>		<p>5</p> <p>The muzzle should be pointed down range at all times. This is the only safe way to carry a loaded revolver.</p>	
<p>3</p> <p>The muzzle should be pointed down range at all times. This is the only safe way to carry a loaded revolver.</p>		<p>6</p> <p>The muzzle should be pointed down range at all times. This is the only safe way to carry a loaded revolver.</p>	
	<p>7</p> <p>The muzzle should be pointed down range at all times. This is the only safe way to carry a loaded revolver.</p>		

## RANGE PRACTICE REMINDERS

- 1. Keep your revolver in your holster until you are on the firing line.
- 2. Stand in a comfortable relaxed position. Feet the same, the ball of the foot the line of the shoulder axis.
- 3. Keep the revolver steady and lightly on an even pressure of muscles. The wrist resting on the middle phalanx of your left and right hand (muzzle facing right) which is lightly extended.
- 4. Breathe easily, steady, regular, slow and deep. Do not hold your breath or hold. Do not look out of sight. If properly held the revolver will shoot accurately right in the center hole in every position.



- 1. Align the bottom edge of the "half" with top of front sight and top of rear sight on the "V". Always use aiming position by which you shoot best by making correction only in your aim on the other.
- 2. Taking the shot and hold BREATH the longer possible. In the case of the M1917, the M1918, M1919, M1920, M1921, M1922, M1923, M1924, M1925, M1926, M1927, M1928, M1929, M1930, M1931, M1932, M1933, M1934, M1935, M1936, M1937, M1938, M1939, M1940, M1941, M1942, M1943, M1944, M1945, M1946, M1947, M1948, M1949, M1950, M1951, M1952, M1953, M1954, M1955, M1956, M1957, M1958, M1959, M1960, M1961, M1962, M1963, M1964, M1965, M1966, M1967, M1968, M1969, M1970, M1971, M1972, M1973, M1974, M1975, M1976, M1977, M1978, M1979, M1980, M1981, M1982, M1983, M1984, M1985, M1986, M1987, M1988, M1989, M1990, M1991, M1992, M1993, M1994, M1995, M1996, M1997, M1998, M1999, M2000.
- 3. Hold breath while aiming large bullseye. If you breathe hold the pressure of your lungs and when you breathe you will miss the point. When you breathe you will miss the point.
- 4. You should not have your arms at shoulder level. They should be at shoulder level, or you to give when the hammer falls.
- 5. "Half your shot" so that you may control your aiming both in your aim shot. And you should use better aim.
- 6. Take good care of your gun and it will take good care of you.



# UNITED STATES CONTROLLED PRICES

Rising prices are America's enemy on the home front. They destroy the value of YOUR dollar.

To halt further increases in the cost of living, our Government has put a top limit on almost all prices.

*This Store Is Enlisted*

Controlled items are priced strictly within  
the limits fixed by the Government.

---

---

**UNITED STATES**

# GOVERNMENT CONTRACT

# NOTICE TO EMPLOYEES

It is a violation of the Public Contracts Act and the Regulations issued thereunder to fail to post this Notice in a conspicuous place where all employees can read it.



This firm is engaged on a Government contract subject to the provisions of the Walsh-Healey Public Contracts Act\* and has agreed to comply with the provisions of the act

An employee who works on this Government contract is subject to the act and

**MUST BE PAID TIME AND ONE-HALF  
FOR ALL HOURS OVER**

**8 IN ANY DAY OR  
40 IN ANY WEEK**

Even though the employee did not work all his time during the week  
on the contract

If a minimum wage is called for by this contract  
the minimum rate of pay must be paid

The Department of Labor is authorized to recover for employees any sums which are due to them for overtime and for payment of less than the applicable minimum wage. \* \* \* No children (boys under 16 and girls under 18) or convict labor may be employed on this contract. Employment of such children and

of convict labor renders employers liable to the United States in liquidated damages in the sum of \$10 a day for each employee so employed \* \* \* This contract must be performed in Factories, Buildings, or Shops which are safe, sanitary, and not dangerous to the health or safety of employees.

\* Public, No. 448, 74th Congress—the Act to provide conditions for the purchase of supplies and the making of contracts by the United States, and for other purposes. (49 Stat. 2025. U. S. Code, 25, 41, and 35-45.)



Complaints and inquiries should be addressed to  
**L. MITCHELL WALLING, Administrator**  
DIVISION OF PUBLIC CONTRACTS  
U. S. DEPARTMENT OF LABOR, WASHINGTON, D. C.

---

**➔ NOTICE TO EMPLOYEES:**

If a wage determination has been made it must be attached in this lower left-hand corner. Write Department of Labor for attachment.

EMPLOYER



1000

UNITED STATES SAVINGS BOND

1000

THE UNITED STATES OF AMERICA  
TEN YEARS FROM THE ISSUE DATE HEROF WILL PAY  
ONE HUNDRED DOLLARS

ISSUE DATE  
WHICH IS THE FIRST DAY OF



To

MR. AND MRS. AMERICA

EVERYWHERE

U. S. A.



WAR SAVINGS  
BOND SERIES **E**

THIS BOND IS ISSUED UNDER AUTHORITY OF THE SECOND LIBERTY BOND ACT,  
AS AMENDED, AND IS SUBJECT TO THE TERMS AND CONDITIONS STATED ON THE  
BACK HEREOF. IT WILL BE VALID AND PAYABLE ONLY IF THE UNITED STATES  
REMAINS AT WAR WITH THE ENEMY OR IF THE UNITED STATES IS IN A STATE OF  
REBELLION OR INSURRECTION OR IF THE UNITED STATES IS IN A STATE OF  
EMERGENCY AS DECLARED BY CONGRESS OR BY THE PRESIDENT OF THE UNITED STATES  
IN WRITING UNDER AUTHORITY OF CONGRESS.



*Morgan Stanley*

C91 473 455 E

LEAF NO. 1

ISSUED BY THE  
UNITED STATES

UNITED STATES SAVINGS BOND



**UNITED**  
we are strong

**UNITED** we will win

United we stand

Divided we fall

**BEAT THE PROMISE**



**"United We Stand.."**



**TWO FOX-HOLES  
DEFENDING  
AMERICA**



ROLLIN  
KITEBY



# Unlock the Door... *QUICK!*

MORE TANKS  
PLANES GUNS

YOU'RE THE  
ONLY ONE  
WHO CAN DO IT!

NOT ENOUGH  
COPPER  
ZINC LEAD

MORE ONE

WALSH  
KIRBY



U. S. ARMY  
OFFICIAL POSTER

**UP AND  
AT 'EM!**



**BUILD MORE PLANES**



U.S. ARMY  
OFFICIAL POSTER

UP AND  
AT 'EM!



**BUILD MORE B-17'S**



U. S. ARMY  
OFFICIAL POSTER

**UP AND  
AT 'EM!**



**BUILD MORE B-24'S**





U.S. ARMY  
OFFICIAL POSTER

**UP AND  
AT 'EM!**



**BUILD MORE B-29's**



U. S. ARMY  
OFFICIAL POSTER

UP AND  
AT 'EM!



**BUILD MORE P-38'S**



U. S. ARMY  
OFFICIAL POSTER

**UP AND  
AT 'EM!**



**BUILD MORE C-46'S**



U. S. ARMY  
OFFICIAL POSTER

**UP AND  
AT 'EM!**



**BUILD MORE P-47'S**





U. S. ARMY  
OFFICIAL POSTER

**UP AND  
AT 'EM!**



**BUILD MORE P-51'S**



U. S. ARMY  
OFFICIAL POSTER

UP AND  
AT 'EM!



**BUILD MORE C-54'S**

**UP** *your  
bond  
buying*

T H R O U G H

**PAYROLL**

★ ★ ★ ★ **SAVINGS**

A N O F F I C I A L W A R M E S S A G E

# URGENT

THESE SPACES FOR MESSAGE CENTER ONLY

TIME FILED **C418** MSG CEN No. **4** HOW SENT **OFACQ7**

MESSAGE (SUBMIT TO MESSAGE CENTER IN DUPLICATE) PRECEDENCE

No. **10** DATE **10 20 1945**

TO **ALL OFFICERS AND ENLISTED MEN**

**RADIOS-TELEPHONES-  
CRITICALLY SCARCE.  
TAKE CARE OF THEM**

COMMANDING OFFICER  
OFFICIAL DESIGNATION OF SENDER

*J. B. Brown*  
SIGNATURE AND GRADE OF WRITER

**430M**  
TIME SIGNED

**TAKE CARE OF THESE CRITICAL ITEMS TOO—**  
field wire • cable • batteries • tools • instruments • replacement parts





# URGENT NOTICE

1. Fighting men and materials are being shifted for final phases of the war with Japan.
2. The enemy is using desperate measures to obtain all information which will help him delay his complete defeat.

Such information is reaching Japan.

3. The small bit of information you discuss may help the Jap determine where, when, and with how much we strike.

4. Don't discuss:

(a) Location or movements of men, ships and materials within, to or from Asiatic-Pacific areas.

(b) New weapons.

(c) Military information gained in confidence.



*Clayton Bissell*

Clayton Bissell, Major General, CSC  
Assistant Chief of Staff, G-2



*Hewlett Thoburn*

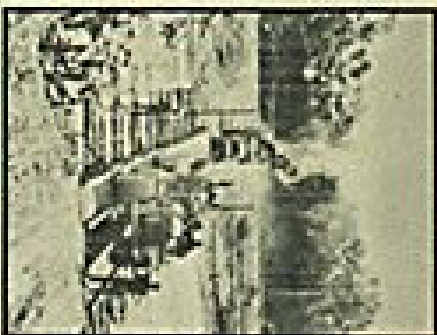
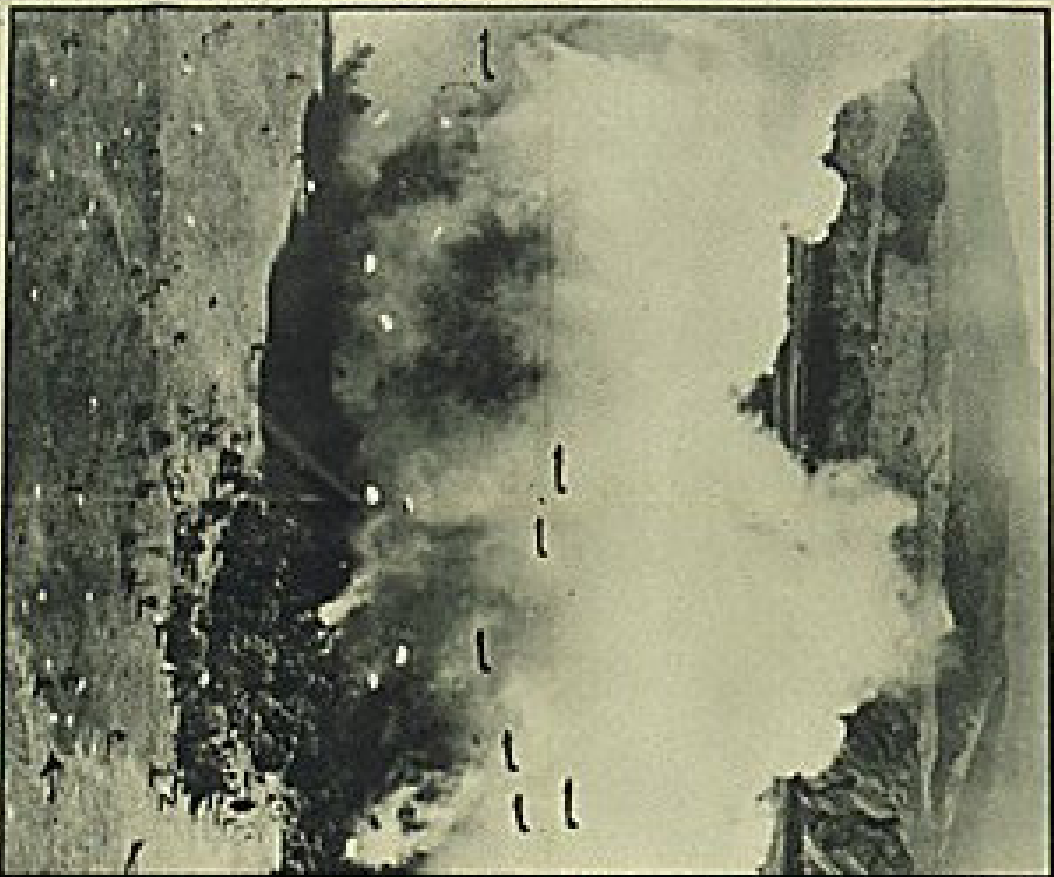
Hewlett Thoburn, Rear Admiral, U. S. Navy  
Director of Naval Intelligence



*J. Edgar Hoover*  
J. Edgar Hoover, Director  
Federal Bureau of Investigation

# U.S.A. IN ACTION

ASF MEN AND MATERIAL ON FAR-OFF FRONTS



**Hot Foot**  
**HOT AFTER JERRY.** (Clockwise from top left) Jerry, probably found him on the beach at Anzio, Italy.



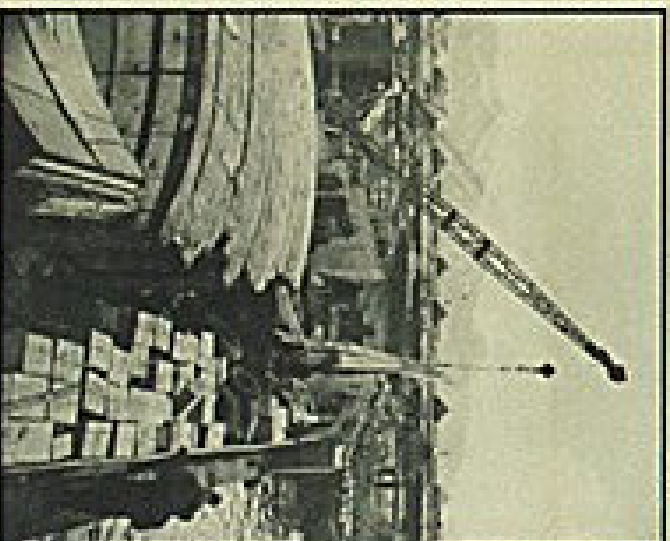
**"BUSH THOSE SPARE PARTS!"** A supply division runs down parts and heavy truck bodies and other equipment in Italy. Under the scrutiny of national news for repair and other to needed areas.



U. S. ARMY  
 OFFICIAL POSTER



**RIVERS BECOME ROADS.** Special forces men make a road-bed at their operations up a stream in the South West Pacific. Road construction here equipment is the only way to keep organized for advance action.



**BUSINESS IS BRISK.** Workers in a paper mill, they in the American Southwest, Mexico, and other areas for the war effort are put to work by the Army, funded all by the new program of M.V.

**SCREENED BY SMOKE** probably led by the light bombers, they were seen by the enemy. The smoke from the bombers was in front of them. Bombers and other planes were in the clouds and the smoke was in the air.

AN ARMY IS AS STRONG AS ITS SUPPLY LINE

# U.S.A. IN ACTION

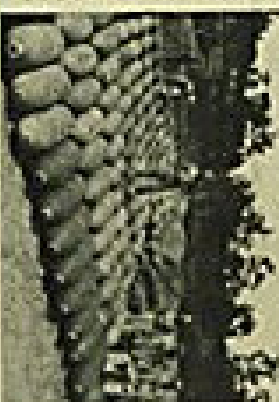
OFFICIAL PICTURES FROM WORLD BATTLEFRONTS



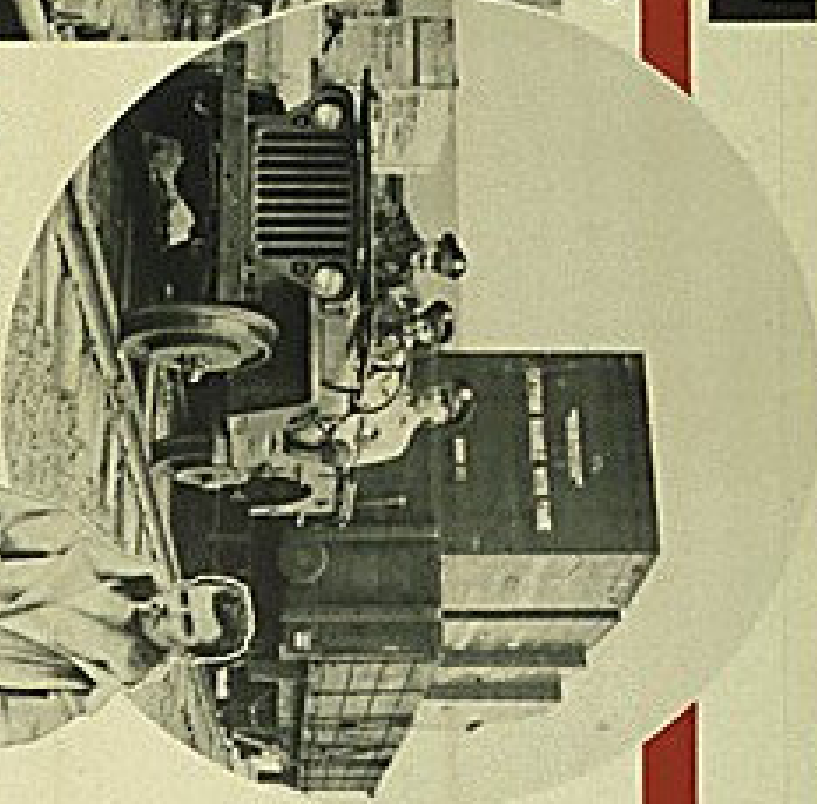
**IN THE TRENCHES.** The great war photographs, taken by a staff selected by the War Department, show the fighting as it really happened. They give you the real story of the war, as it was seen by the men who were there. They are the most important pictures ever taken. They are the most important pictures ever taken. They are the most important pictures ever taken.



**THE GREAT WAR.** The great war photographs, taken by a staff selected by the War Department, show the fighting as it really happened. They give you the real story of the war, as it was seen by the men who were there. They are the most important pictures ever taken. They are the most important pictures ever taken.



**THE GREAT WAR.** The great war photographs, taken by a staff selected by the War Department, show the fighting as it really happened. They give you the real story of the war, as it was seen by the men who were there. They are the most important pictures ever taken. They are the most important pictures ever taken.



**THE GREAT WAR.** The great war photographs, taken by a staff selected by the War Department, show the fighting as it really happened. They give you the real story of the war, as it was seen by the men who were there. They are the most important pictures ever taken. They are the most important pictures ever taken.

**THE GREAT WAR.** The great war photographs, taken by a staff selected by the War Department, show the fighting as it really happened. They give you the real story of the war, as it was seen by the men who were there. They are the most important pictures ever taken. They are the most important pictures ever taken.

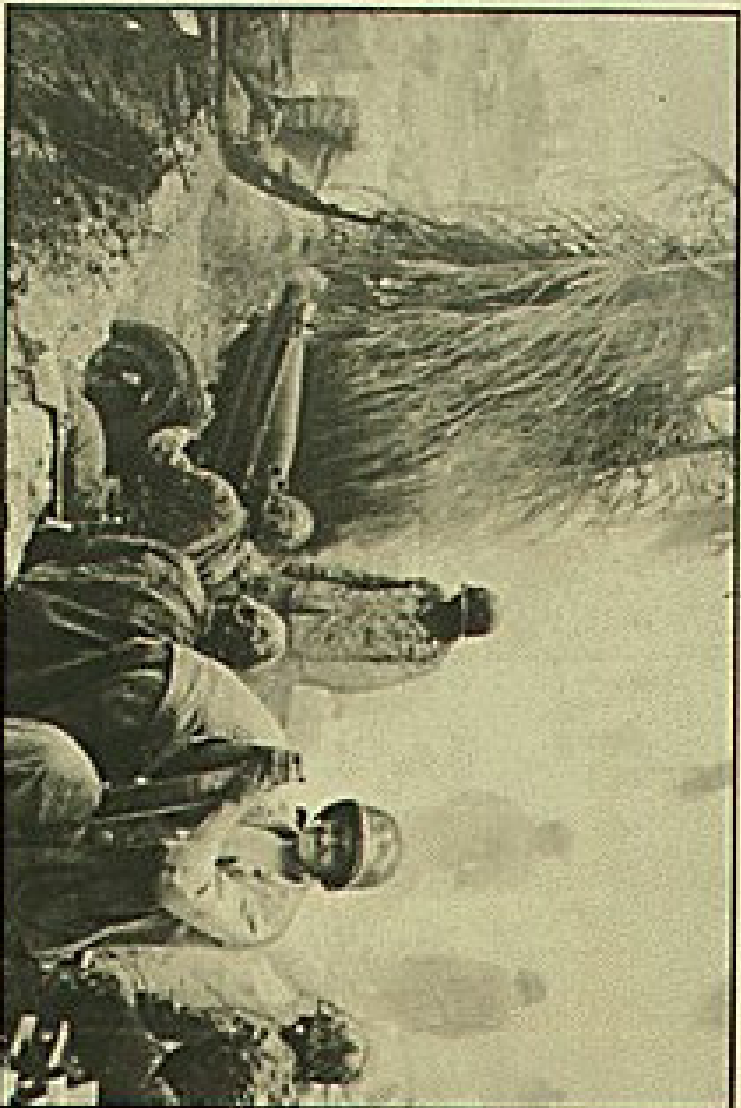


U.S. ARMY  
OFFICIAL PICTURE



AN ARMY IS AS STRONG AS ITS SUPPLY LINE

# U.S.A. IN ACTION



**TOUGH GOING** in Korea is the picture with the American soldiers who are fighting in the front lines. They are the men who are making the difference between the enemy and the U.S. Army.



U. S. ARMY  
OFFICIAL POSTER

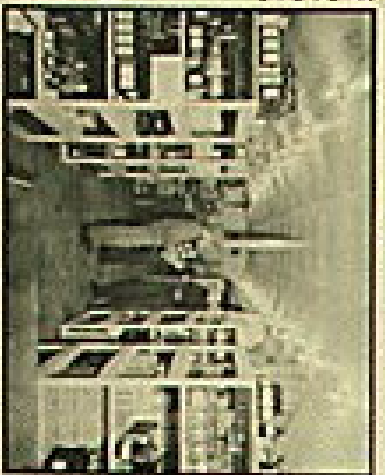
**JOIN YOUR ANCESTORS**—and you will be part of the great tradition of the U.S. Army. The U.S. Army is the greatest force in the world. It is the force that has won the freedom of the world.



**GET A HORSE!**—This is how the soldiers in the front lines in Korea are getting their supplies. They are using the horses to carry their supplies to the front lines.



**THE CAVERN OF TOULON**—This is how the soldiers in the front lines in Korea are getting their supplies. They are using the caverns to store their supplies.

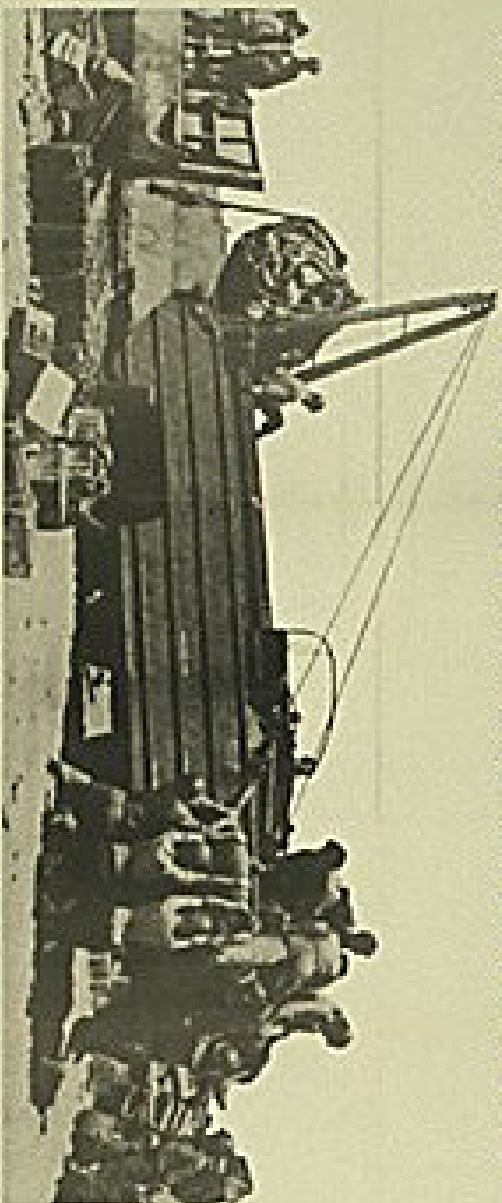


**Invasion success depends on SUPPLIES!**

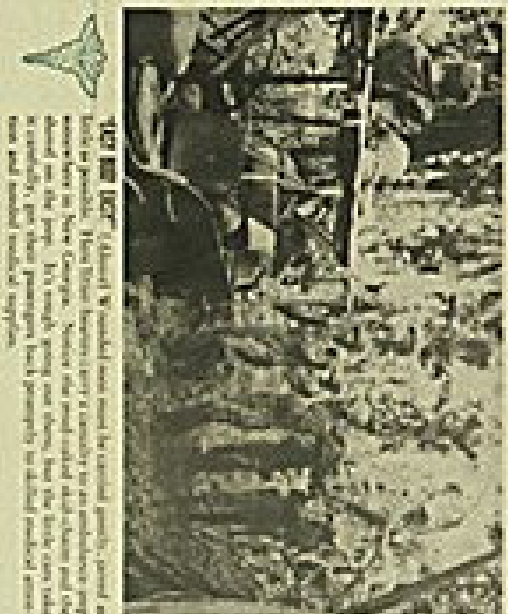
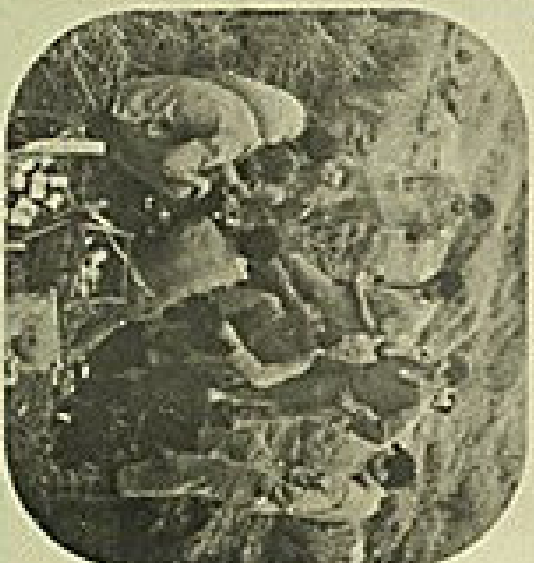


# U.S.A. IN ACTION

OFFICIAL PICTURES FROM WORLD BATTLEFRONTS

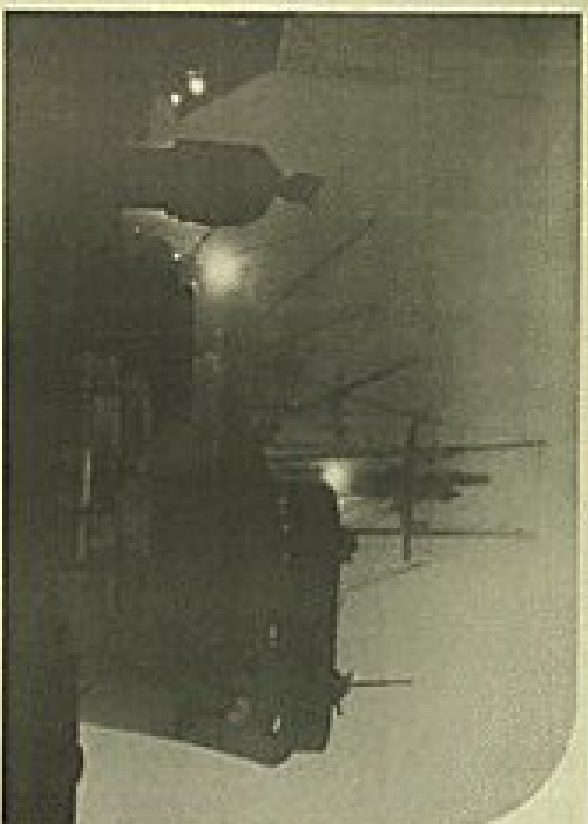


**TRUCK BEING PULLED UP**—Transport team being driven over steep and dangerous slope under heavy loads. The "Dodge" transport truck, the backbone of military transport, is being pulled up by a team of soldiers. The truck is heavily loaded with supplies and equipment. The team is being pulled up by a team of soldiers.



**TRUCK BEING PULLED UP**—Transport team being driven over steep and dangerous slope under heavy loads. The "Dodge" transport truck, the backbone of military transport, is being pulled up by a team of soldiers. The truck is heavily loaded with supplies and equipment. The team is being pulled up by a team of soldiers.

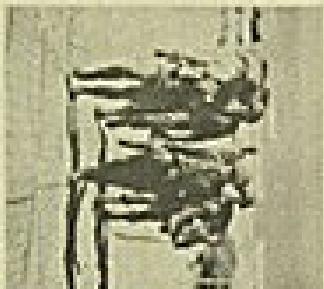
**TRUCK BEING PULLED UP**—Transport team being driven over steep and dangerous slope under heavy loads. The "Dodge" transport truck, the backbone of military transport, is being pulled up by a team of soldiers. The truck is heavily loaded with supplies and equipment. The team is being pulled up by a team of soldiers.



**TRUCK BEING PULLED UP**—Transport team being driven over steep and dangerous slope under heavy loads. The "Dodge" transport truck, the backbone of military transport, is being pulled up by a team of soldiers. The truck is heavily loaded with supplies and equipment. The team is being pulled up by a team of soldiers.



U. S. ARMY  
OFFICIAL POSTER



**TRUCK BEING PULLED UP**—Transport team being driven over steep and dangerous slope under heavy loads. The "Dodge" transport truck, the backbone of military transport, is being pulled up by a team of soldiers. The truck is heavily loaded with supplies and equipment. The team is being pulled up by a team of soldiers.

★ OUR TROOPS COUNT ON YOU, SOLDIERS OF SUPPLY! ★





USE FOR MEDICAL PURPOSES

ONLY



*Life Support  
Conservation*

ARMY CONSERVATION PROJECT NO. 81-44-4

© 1954 Government Printing Office: 1954-1-10-10000

**USE IT FOR**



**WHAT  
IT WAS  
MADE  
FOR!**

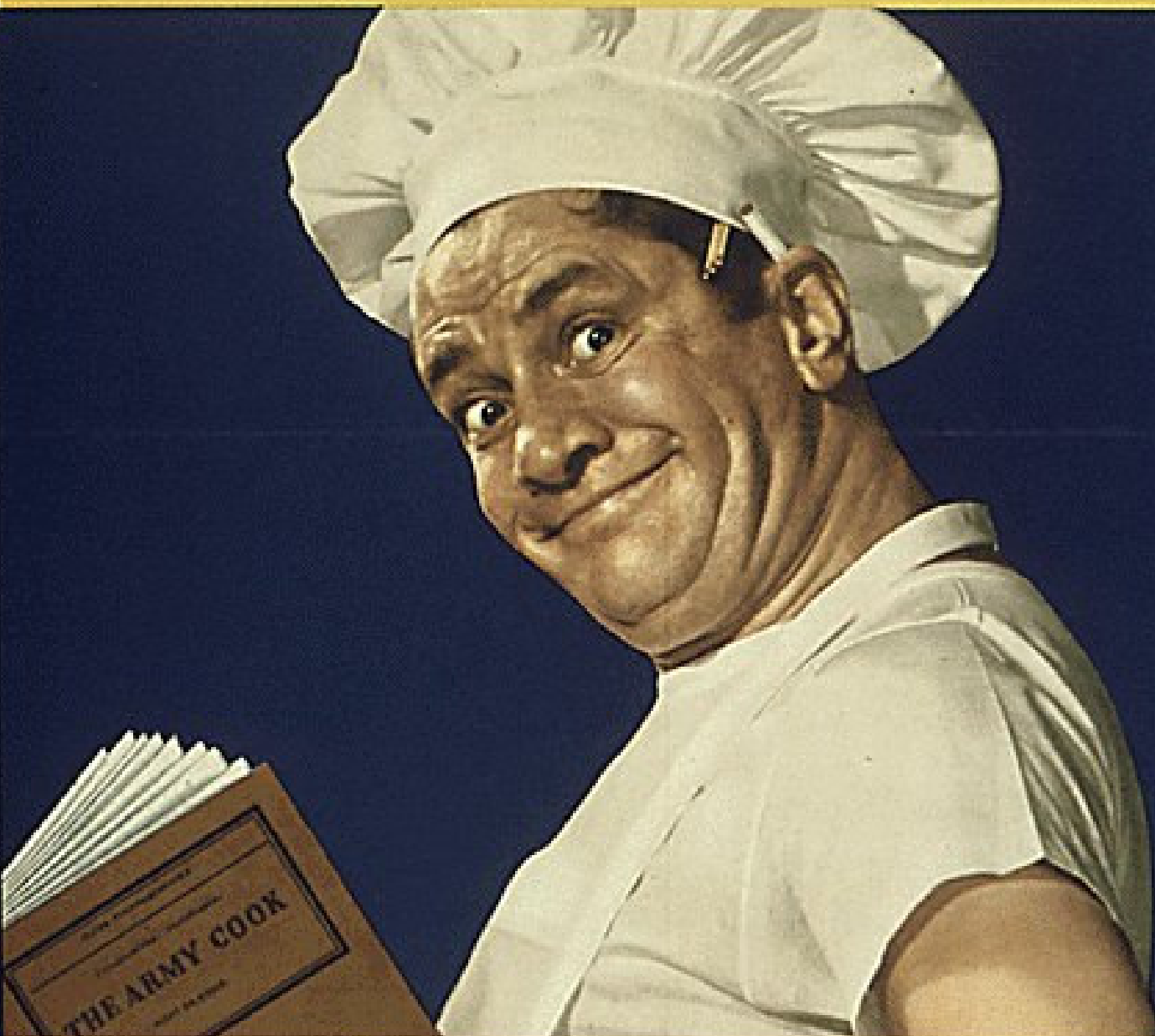


**SAVE**



# USE LEFTOVERS

... — mark of a Good Cook



**Study Your "Army Cook"  
for Recipes — Ideas**



Keep

All

Lines

Off

Walkway

Surfaces

THORNDIKE



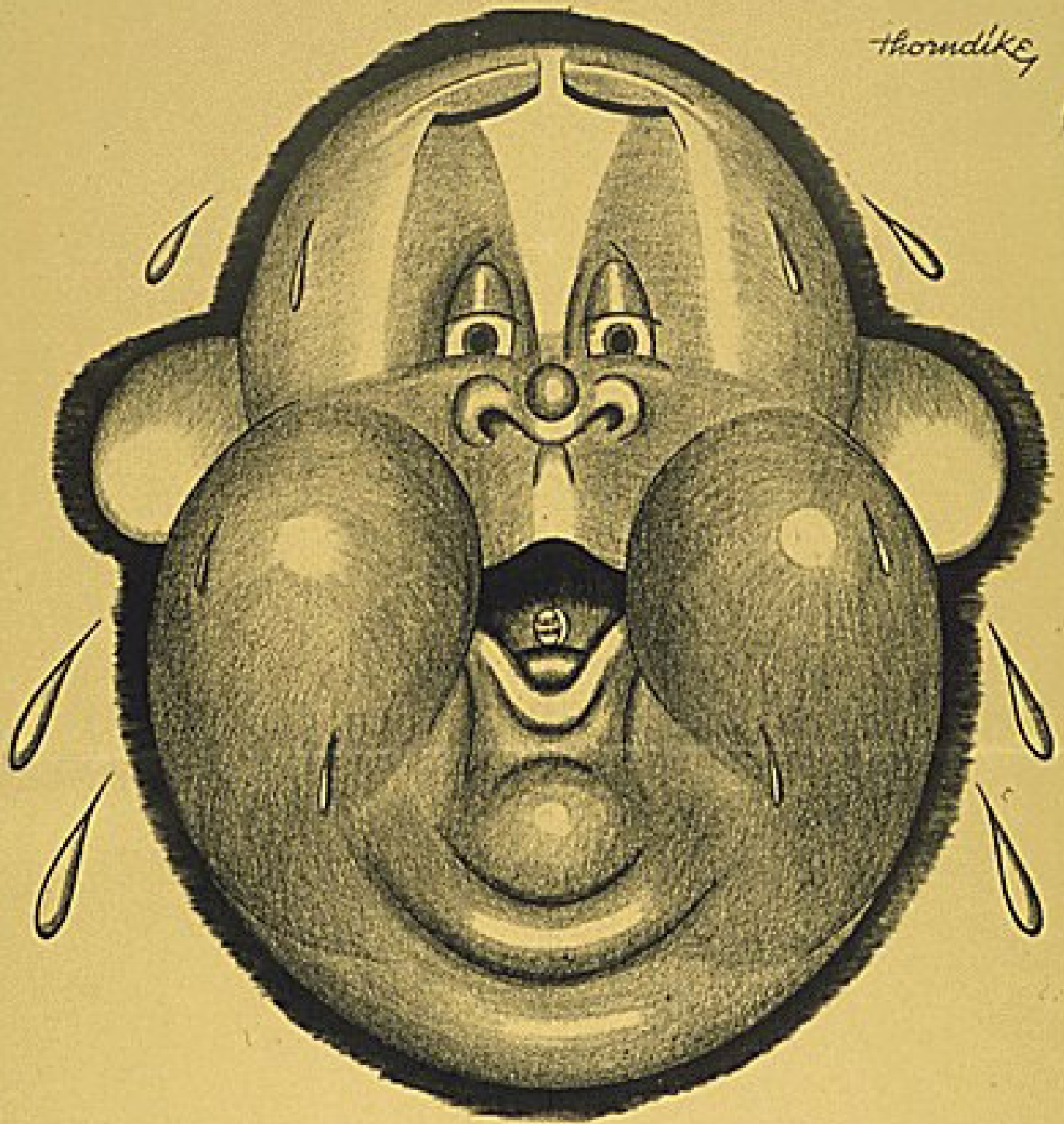
**USE OVERHEAD RACKS  
OR TROUGHS**

POSTER IDEA SUGGESTED BY MARK ISLAND, NVTI  
NAVY DEPARTMENT SAFETY POSTERS



**USE PHOSPHATES  
AND LIME - IT PAYS**

*Thorndike*



**USE SALT TABLETS**  
**to beat the heat!**

NAVY DEPARTMENT SAFETY POSTER

**PREVENT  
FOREST  
FIRES!**



**Use the ash tray**

U. S. DEPT. AGRICULTURE, FOREST SERVICE

STATE FOREST SERVICE

# Use proper tools FOR THE JOB



Never drive nails with a  
Machinist's hammer



Never use a wrench  
too large for nut



Never use file  
without a handle



Never use a carpenter's  
hammer on metal

## Take care OF THEM



... for our patrons' health



**Use a fork - don't be a butterfinger**

**A WAR  
MESSAGE**

**Use  
V-MAIL  
Today!**

**FAST  
SAFE  
SAVES  
CARGO  
SPACE**



# V-MAIL

*is* **SPEED MAIL**



**V-Mail Stationery 10¢ 25¢ 50¢ PACKAGES**

SPONSORED BY ARMY AND NAVY V-MAIL MERCHANDISING COMMITTEE FOR OFFICE OF WAR INFORMATION